

Compacts of Character
by

KIGU



Index

<u>SERIES</u>	<u>PAGE</u>
06 " DAHLIA "	24
17 " LIDO "	18 & 19
26 " DOLPHIN "	10
51 " MINI "	21
52 " GLORIA "	4 & 5
53 " MINERVA "	25
56 " OXFORD "	14
57 " CITY "	15
58 " CHERIE "	27
67 " CONTESSA "	14
69 " KARETTE "	20
70 " VENUS "	1, 2 & 3
71 " WINDSOR "	22 & 23
72 " ASCOT "	22
73 " MINUETTE " MUSICAL ..	8
74 " PARTY CASE "	13
77 " CONCERTO " MUSICAL ..	9
78 " BOLERO "	12
82 " CAMBRIDGE "	26
88 " COMET "	15
89 " RONDO " MUSICAL ..	11
90 LADIES' CIG. CASES ..	32
94 " FIRENZE "	11
95 MEN'S CIG. CASES ..	32
96 " DOLPHIN " CIG. CASES ..	10
97 " DOLPHIN " CIG. CASES ..	10
98 " DOLPHIN " KING SIZE ..	10
600 " REGENCY "	7
617 " MAYFAIR "	6
620 " FANTASY "	6
BRIDESMAIDS' COMPACTS ..	26
COMB FOLDER	in Pocket
" FLIPETTE "	31
" FLIPPY "	31
INITIAL COMPACTS	28
LOCKET COMPACTS	25
PERFUME BOTTLES " AROMETTE " ..	31
PILL BOXES	30
PRESENTATION CASES	29
SILVER COMPACTS	16 & 17
TRINKET BOXES	11 & 29
UNITS	18 & 24
" ZODIAC " COMPACTS	28
PRICE LIST	in Pocket

70 SERIES

KIGU

Venus

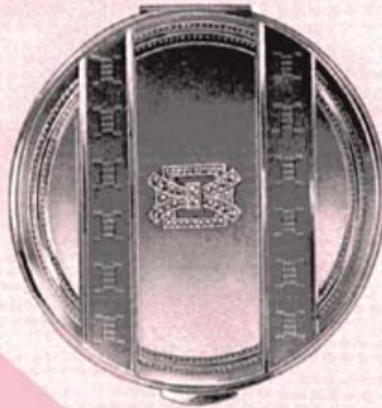
A dream of a compact with the exquisite slimmness created for the discerning; fitted spill-proof built-in lid, patented Kigu sliding catch to protect finger nails.
A most sought after compact by women of taste.

Size: 3 1/8" dia. (77 mm. dia.). Weight: 4 oz. (113 grams).



70-910

One cannot resist the adorable style of this creation. The mellow-smooth surface is decorated by two half panels in superior engine turned design. The finish of this all gilt compact is superbly luxurious.



70-919MJ

The tasteful engine turned pattern vies in beauty with the silky satin background. The jewelled ornament adds a touch of glamour to this all gilt compact of high fashion appeal.



70-21MJ

The glamorous jewel mount, offset against the depths of the highly polished, jet black enamel background, produces a most beguiling effect. Supplied with assorted jewel mounts.



70-605

The combination of two engine turned designs—fine spots, evenly dispersed and the elegant "barley" border—is most appropriate. Subdued elegance and classical simplicity displayed to perfection by the quality of jeweller's finish in all gilt.



70-911

Symmetrical slenderness makes this all gilt compact a most desirable fashion accessory. The raised bright "firework" pattern on a specially dainty engine turned background sounds a new note of dignified charm.

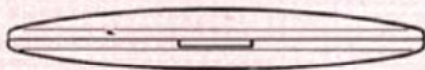
70-911 GSP

As above but in two tone, gilt on silver-plated background.



70-20

The delicately patterned Tudor Rose motif on a fine linen background gains in distinction by the excellence of the jeweller's gilt finish.



This illustration shows the side view of our Venus Series of compacts. Note the extreme slimmness of construction, which is patented and unique.

70 SERIES
Continued over



70-717

The engine turned pattern of the "shantung" background in all gilt jeweller's finish combined with superimposed lines and bright stars create the clean cut elegance that appeals to the elite.

All Kigu compacts are made of highly polished gilding metal, protected with an invisible film of enamel which preserves their jewel-like lustre even under extreme climatic conditions. All Kigu compacts are fully guaranteed. Each compact is supplied individually boxed, complete with puff, sifter and pochette, packed six to an outer.

70 SERIES

KIGU

Venus

A dream of a compact with the exquisite slimness created for the discerning; fitted spill-proof built-in lid with patented Kigu sliding catch to protect finger nails.

A most sought after compact by women of taste.
Size: $3\frac{1}{8}$ " dia. (77 mm. dia.). Weight: 4 oz. (113 grams).



70-826B

An engraved spiral design of highly polished jeweller's gilt, radiating from a central initial medallion, is interwoven with an embossed floral pattern against a black background.

70-826W

As above but with white background.



70-825

On a brilliantly finished translucent blue enamel background, a sublimely lovely, white and gilt flower motif adds decoration to quality.

70-829

Same design as above but on black enamel.



70-26

A slimly styled compact of captivating design. The intricate, gilt chased Florentine pattern, flawless in its fine execution, is inlaid on lustrous black enamel background for a captivating effect.



70-747

The colourful floral pattern makes a gay motif on the opalescent film of turquoise, coral or white enamel through which glimmers the silver ray effect of the glittering engine turned background.

70-7747

Also available silver-plated throughout.



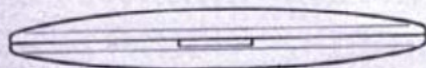
70-540

The patterning, two birds on the wing, is designed with delicate grace and superimposed on a translucent, azure blue background radiating beams of light from the centre. Delightfully gay. Available with assorted bird motifs, all on azure blue background.



70-375P

The colouring of the roses, so naturally portrayed on the highly polished satin silver background, provides a sparklingly smooth setting for a design universally loved by women.



This illustration shows the side view of our Venus Series of compacts. Note the extreme slimness of construction, which is patented and unique.



70-908GSP

Slim allurements in a lavishly engraved compact. The rich craftsmanship of the chased gilt pattern is accentuated by the delicately interlaced silver plating and the encompassing border of superfine engine turned design.

70-908

As above but in all gilt.

All Kigu compacts are made of highly polished gilding metal, protected with an invisible film of enamel which preserves their jewel-like lustre even under extreme climatic conditions. All Kigu compacts are fully guaranteed. Each compact is supplied individually boxed, complete with puff, sifter and pochette, packed six to an outer.

70 SERIES

KIGU

Venus

A dream of a compact with the exquisite slimness created for the discerning; fitted spill-proof built-in lid with patented Kigu sliding catch to protect finger nails.
A most sought after compact by women of taste.

Size: 3 1/8" dia. (77 mm. dia.). Weight: 4 oz. (113 grams).



70-914
The ingenious woven effect of the engine turned pattern evokes an extra touch of class and contemporary elegance. This tastefully patterned compact with the streamlined slimness is as pleasing as it is practical.



70-28
Design that baffles imitation—embodied in this slim black enamel compact. The entrancing gilt pattern depicts entwined leaves, slender stems and flowers with glowing coloured rhinestones set in their centres.



70-815MJ
Flowing curves of beauty in a Catherine-wheel pattern compact of extra slender elegance. The high gloss in all gilt illuminates the brilliance of the immaculate engine turned design which is tastefully finished with the jewel mount.

70-815
As above but without jewel mount.



70-912
Fine "firework" in gleaming gilt on velvety satin. The delicate "barley" engine turned bands enhance its contemporary appeal.



70-11
The superfine satin background adds elegance to a delightfully bright gilt outline of flowers, richly massed in relief.

70-11GSP
As above but in two tone, gilt outlines on silver-plated background.

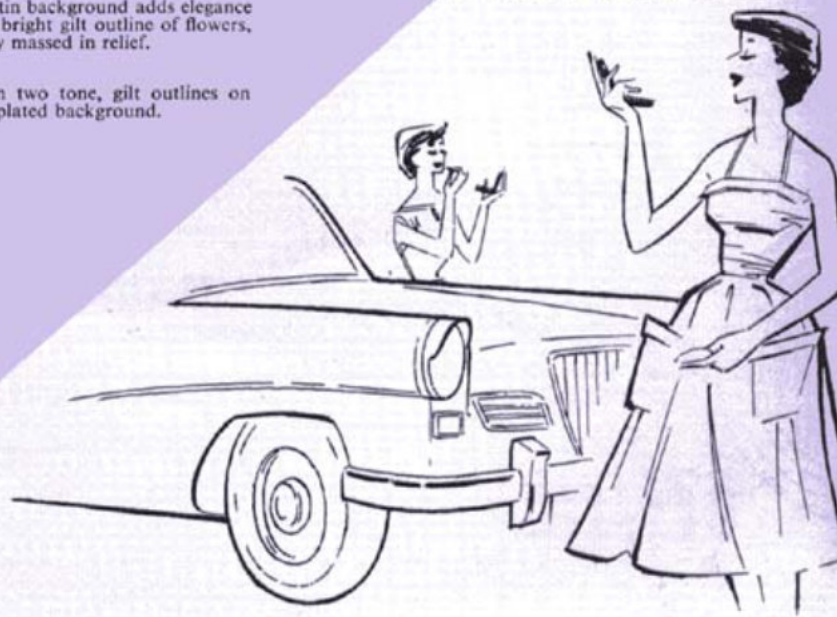


70-7747MJ
This exclusive creation, silver-plated throughout, in pink, blue or white enamel, reflects a fascinating pattern of light. The jewel mount is a superb ornament.

70-747MJ
As above but with silver-plated top only.



70-909 GSP
Chic and character in two-tone creation. This silver-plated dream-spun satin compact is ideally embellished by the gilt border and centre panel in chased and engine turned design and the oscillating wavy gilt pattern.



Its handy size and gently domed shape make this an extremely popular series. It has the patented fluted Kigu construction which makes it an outstanding spill-proof compact; fitted inner lid with patented sliding catch to protect finger nails.
Size: 3" dia. (73 mm. dia.). Weight: 3 1/2 oz. (100 grams).



52-83
The translucent loveliness of mother-of-pearl sensitively interpreted in a compact of manifold charm and flawless quality.

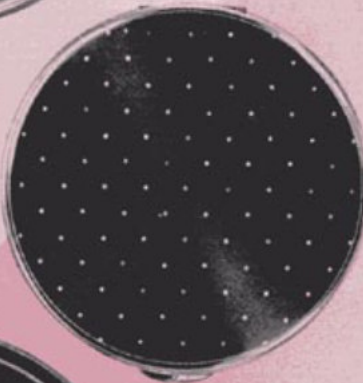


52-924
A finely scalloped ebony black border which offsets the swirling movement of the engine turned gilt design of fine lines surrounding the medallion centre.



52-28
The lustrous black enamelled top with gilt lines and initial panel make this combination of black and gold one of the most inspired designs.

52-25
A delightful compact with white polka dots on translucent azure blue background. The radiating beams of light are shimmering through, giving a fascinating effect.



52-52MJ
As above but with assorted fashion jewel mounts.



52-949
The translucent azure blue background is ideal for the loveliness of the swans in their natural setting. A serene and inspiring design.



52-27MJ
This highly polished black enamel compact, embellished by a gilt ring, provides a distinctive setting for the delicate jewel mount.



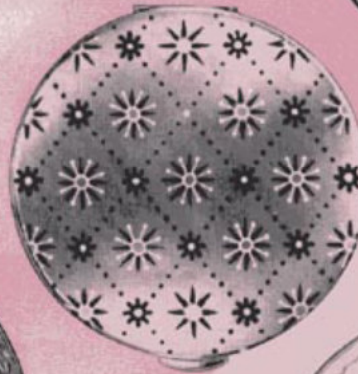
52-919GSP.MJ
A two-tone creation in which the glow of gilt in the "barley" engine turned design adds radiance to the smooth satin finish of the silver rings. The Kigu jewel mount is a distinctive adornment.

52-919
This velvet smooth satin compact is decorated with engine turned "barley" pattern rings and highlighted with bright gilt border. The quintessence of beauty and grace.



52-832
This compact of a black and white star design on satin gilt has a touch of the unusual. Assorted with another pattern, equally effective.

52-936
Against a smooth silky satin background, coloured ribbons and leaves are attractively mingled. The jeweller's gilt finish adds enduring lustre.



52-30
An enticingly lovely Petit Point floral embroidered insert in an engine turned gilt frame makes this compact a welcome gift.



This sketch is showing the inner lid with the patented Kigu sliding catch to protect finger nails.

52-828B
Against the rich lustre of an intensely black background, a raised gilt scroll design stands out in striking relief and is a delight to behold.

52-828W
As above but on white background

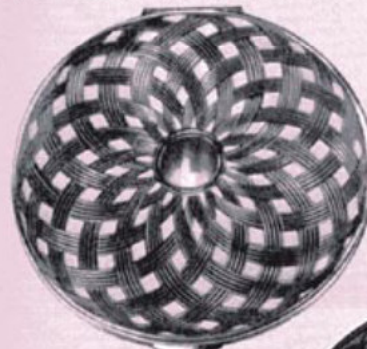
All Kigu compacts are made of highly polished gilding metal, protected with an invisible film of enamel which preserves their jewel-like lustre even under extreme climatic conditions. All Kigu compacts are fully guaranteed. Each compact is supplied individually boxed, complete with puff, sifter and pochette, packed six to an outer.

52 SERIES

KIGU

Gloria

Its handy size and gently domed shape make this an extremely popular series. It has the patented fluted Kigu construction which makes it an outstanding spill-proof compact; fitted inner lid with patented sliding catch to protect finger nails.
 Size: 3" dia. (73 mm. dia.). Weight: 3 1/2 oz. (100 grams).



52-829W
 The basket weave gilt engine turned design is picked out in white to produce an intriguing effect to which the superior jeweller's finish adds extra attraction.

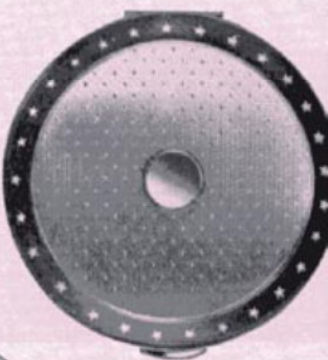
52-829B
 As above but in black and gilt.



52-747MJ
 The silver ray effect from the engine turned pattern is transmitted through a film of opalescent turquoise, coral or white enamel of almost gossamer fineness and the jewel mount adds an elegant finishing touch.

52-7747MJ
 As above but silver-plated throughout.

52-927
 This compact, in gilt engine turned design of neat spots and fine lines, is framed in a black lustrous border on which sparkling gilt stars are artistically superimposed.



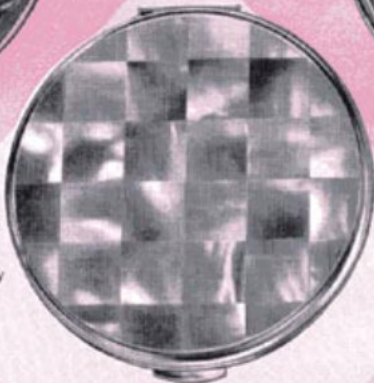
52-717
 Elegant "shantung" superfine engine turned design makes an eminently suitable background for the masterly executed engraved motif of deer in movement. The jeweller's gilt finish heightens the quality.



52-05
 The superior quality of the stylish all gilt engine turned design of gleaming bright and fine vertical lines and the unusual positioning of the initial panel are distinguishing features of this compact.



52-07
 The superb quality of this compact in jeweller's gilt "barley" engine turned design and specially fine baroque engraved border is the essence of good taste.



52-85
 Real inlaid mother-of-pearl has the rich, luminous beauty and natural opalescent quality that produces shades of light and loveliness and has an appeal to all.

52-08
 The central mirror polished initial panel highlights the richly engraved scroll design which dominates this compact.



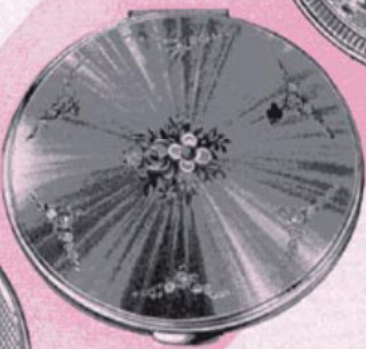
52-747
 The entrancing silver ray effect of the engine turned design beneath turquoise, coral or white opalescent enamel is beautifully complemented by an artistically arranged posy of natural colour.

52-7747
 As above but silver-plated throughout.

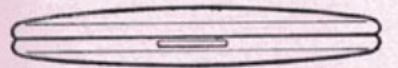
52-903
 Stylish engine turned pattern with a medallion centre. Surrounded by sun ray lines and a gilt floral engraved border. Truly a beautiful effect.



52-13
 The excellence of the "barley" engine turned design and the perfect gilt finish of this classical pattern combine simplicity with graceful elegance.



52-62
 The natural beauty of floral realism in "3-D" is captivated by the perspex insert set in an engaging gilt frame of engine turned design, making this compact a delightfully gay creation.



This illustration shows the side view of our "Gloria" Series of compacts. The gently domed shape and patented fluted edge are well noticeable on this unique construction. Pat. No. 669060.



All Kigu compacts are made of highly polished gilding metal, protected with an invisible film of enamel which preserves their jewel-like lustre even under extreme climatic conditions. All Kigu compacts are fully guaranteed. Each compact is supplied individually boxed, complete with puff, sifter and pochette, packed six to an outer.

6
617 SERIES

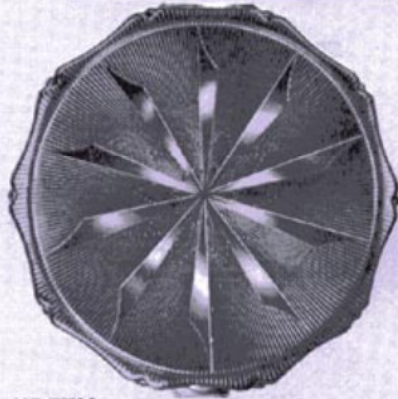
KIGU

Mayfair

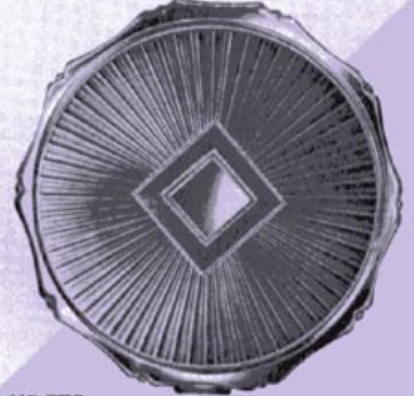
The "Mayfair" convertible compact of elegant contours and graceful proportions is suitable for loose and solid (Creme) powder. The fitted lever-action retaining ring (pat.) will hold all makes of "Creme Powder" firmly. Size: 3" dia. (76 mm. dia.). Weight: 3½ oz. (100 grams).



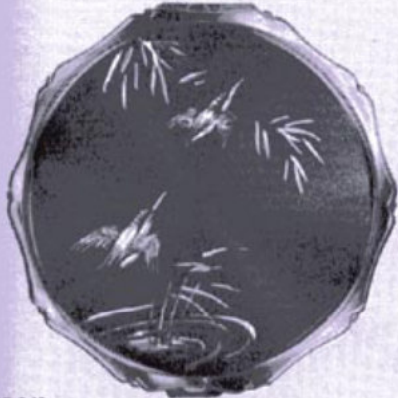
617-4901
The translucent azure blue enamel background is a becoming setting for the refreshing spray of colourful chrysanthemums framed by a highly polished gilt border. This convertible has instant appeal.



617-ETX
This convertible compact in gilt engine turned fine jeweller's finish has a star pattern in broad bands of highly polished gilt. A modern design executed in superb craftsmanship ensures lasting charm.



617-ETR
A shining bright square initial panel surrounded by a delicately patterned frame forms the centre from which emanate bright rays of a lustrous gilt engine turned design. A truly magnificent compact of vivid yet restrained elegance.



617-940
Colourful kingfishers appear against the vivid translucent blue enamel background which catches the light and reflects it in revolving beams. The highly polished gilt surround completes this charming compact.



617-747MJ
The superb loveliness of silvery engine turned rays shining through the delicate colours of pink, blue or white enamel is lightened by the silver-plated border. The exquisite jewel mount gives glamorous finish to this convertible compact. (Supplied with assorted MJ.)



617-01
A classic of a convertible. All gilt jeweller's finish "barley-corn" engine turned pattern, with mirror polished bright initial medallion in centre combines simplicity in design and restrained elegance.



617-21MJ
Shining jet black enamel with a delightful heart jewel mount is set off most beautifully by the bright gilt jeweller's finish surround. This jewel mount is one of six different designs supplied assorted. A convertible compact to cherish.



617-ETO
From a mirror polished initial medallion flow the graceful curves of the Catherine-wheel design in jeweller's all gilt engine turned finish. The artistically designed lustrous gilt border shows yet another example of perfection in styling.



617-549
Swans and cygnets in their natural and colourful surroundings make a graceful picture against the translucent azure blue enamel background and bright gilt frame. Talented craftsmanship at its best in this convertible compact.

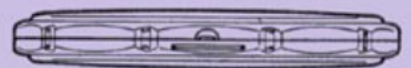
620 SERIES *Fantasy*

"Fantasy", one of our slimmest compacts for loose powder, is identical in design and outline to the "Mayfair" Series. Its graceful styling and elegant proportions appeal instantly to the sophisticated. Available in all the patterns illustrated above.

Side view of our slim "Mayfair" Convertible compacts for solid or loose powder.



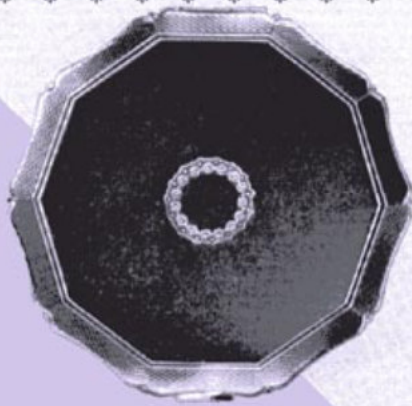
Same designs available in the slim "Fantasy" series for loose powder only. Side elevation showing distinctive slenderness.



600 SERIES

KIGU

Regency



600-23MJ

Beautiful black enamel fancy round compact with central jewel mount and engine turned gilt border. A classical design for the connoisseur.

Slender fancy round compact of new classical shape, beautifully made to uncompromising Kigu standards of quality. Fitted with spill-proof built-in inner lid.

Size: 3" dia. (76 mm. dia.). Weight: 3 oz. (85 grams).



604-131

This slender fancy round compact of translucent vivid blue enamel background is studded with gold stars. The satin smooth gilt border with blue scroll work is a fitting finish to delight the eye.



602-404

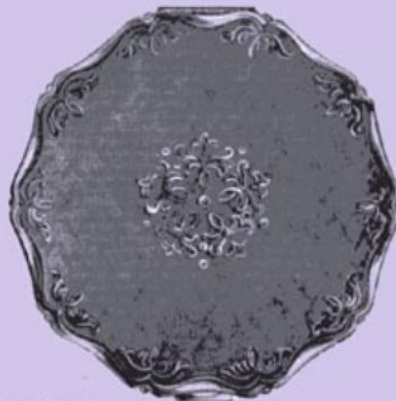
A delightful pattern of red and white on a shiny smooth satin gilt background. The reflected revolving beams of light spell animated beauty, styled to appeal to all tastes.

617 — Locket

617—"Mayfair" Compact also available with heart shaped **LOCKET** which has a secret opening (pat. pen.).

617-671—Black enamel.

617-673—All gilt.



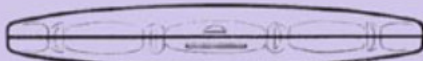
605-817GSP

A two-tone compact that is distinctively Kigu. On a shimmering silver-plated "shantung" background gilt motifs accentuate the attractive fancy shape which sets the seal on quality and workmanship.



606-369

The highly polished all gilt design of exquisite butterflies and flowers shows up to perfection on the smooth satin background. The skill of the artist at his inspired best is revealed.

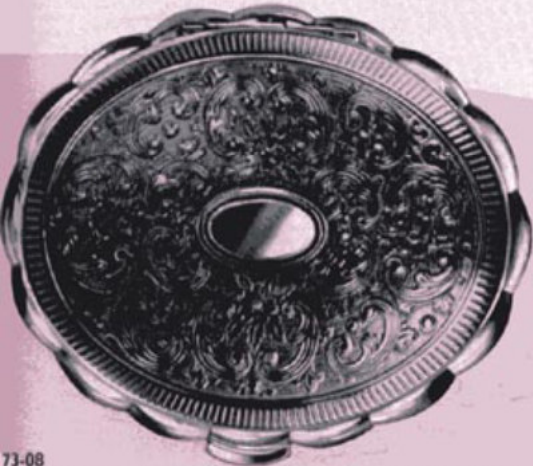


Side elevation of 600 Series "Regency" showing the streamlined slimmness of this compact. The perfectly matched top and bottom close like a watch case.

All Kigu compacts are made of highly polished gilding metal, protected with an invisible film of enamel which preserves their jewel-like lustre even under extreme climatic conditions. All Kigu compacts are fully guaranteed. Each compact is supplied individually boxed, complete with puff, sifter and pochette, packed six to an outer.



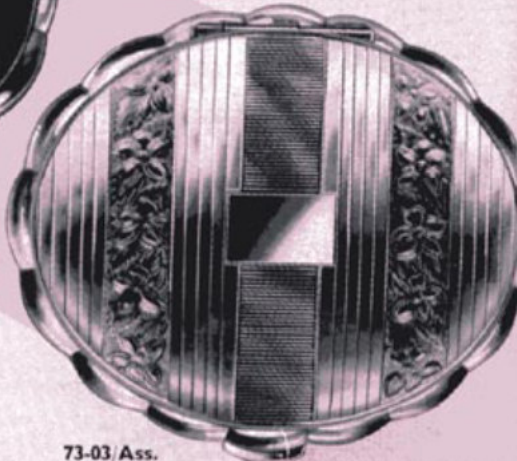
For a further selection of most attractive designs, please refer to opposite page as all the engine turned patterns on the "Mayfair" compacts (617 type) are available in the above Series. (605-01, 605-ETO, 605-ETR, 605-ETX).



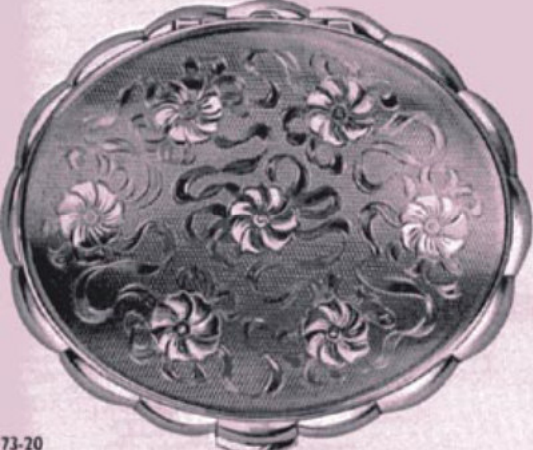
73-08
An intricately engraved scroll design in glittering all gilt finish embellishes this musical compact. A lovely contrast is achieved by the smooth simplicity of its rounded scallops forming the base. It gives real pleasure to handle this well-proportioned and elegant compact.



73-21MJ
The shining jet black enamel top with charming jewel mount on the highly polished gilt scalloped base combine to create an object of beauty. The sweet notes of a lilting tune in this musical compact give constant pleasure to its proud possessor.



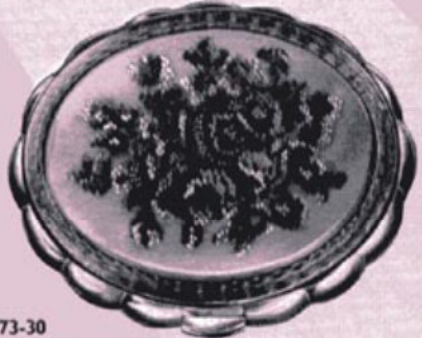
73-03/Ass.
Another musical compact in glittering jeweller's gilt finish. The oblong initial panel is placed in the centre of the classical beauty of the highly polished engine turned and engraved design. This number is supplied in three assorted, equally attractive, engine turned patterns.



73-20
Amongst the glittering floral motifs a gracefully engraved gilt ribbon winds its way—a lively and charming design in jeweller's all gilt finish. A compact really worthy to house music.



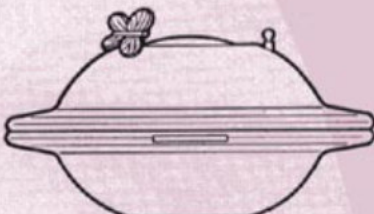
73-02MJ
An exquisitely engine turned pattern, adorned by a glittering fashion jewel, decorates this lovely compact. The gently domed shape of this all gilt musical compact is enough to delight the eye.



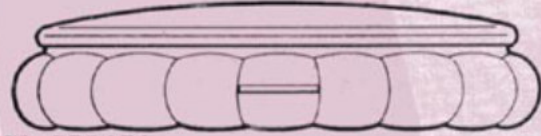
73-30
The delicate colouring and fine embroidery of the Petit Point motif is displayed to advantage in its highly polished engine turned gilt frame. We have a musical compact here that will appeal to the lady with an eye to detail.



73-51 "Flying Saucer" REG.
A novelty musical compact, round, with a deep well for powder. While the music is playing, a gorgeous colourfully enamelled butterfly (the winder disguised) revolves and appears to flutter around on the star sprinkled azure blue dome. Supplied with puff, sifter and special drawstring "Dorothy Bag".



73-51 Side elevation
Shows the interesting line of our interpretation of this controversial aerial object. The deep powder well in the base and the full-size large mirror makes this a practical yet strikingly different musical compact.



73 SERIES
Side elevation shows contours modelled on the ever popular classical snuff-box style which serves as an ideal sound box for the miniature built-in musical movement.

All Kigu compacts are made of highly polished gilding metal, protected with an invisible film of enamel which preserves their jewel-like lustre even under extreme climatic conditions. All Kigu compacts are fully guaranteed. Each compact is supplied individually boxed, complete with puff, sifter and pochette, packed six to an outer.



KIGU



77-909GSP

The engine turned gilt border with the delicate floral design and the bright gilt wavy lines are in elegant contrast with the silver-plated satin background. A musical compact of utmost elegance.

77-909

As above but in all gilt satin and bright jeweller's finish.



77-10MJ

The beautifully finished gilt satin top emits a restrained golden glow and in its centre nestles a lovely, sparkling jewel mount. A musical compact of supreme elegance to delight the heart.



77-910MJ

The smooth glow of satin gilt forms the ideal background for the large, intricately designed, glistening jewel mount. This is another example from Kigu's extensive range of musical compacts.



77-07GSP

The shimmer of silver-plate in flawless satin finish presents the right background for the glittering bright gilt design of flowers and butterfly. This musical compact is a treasure to be coveted by all lovers of beautiful things.

77-07

Also available in all gilt.



77-21MJ

The gleaming jet black enamel top surrounded by a glittering gilt frame is adorned by an impressive fashion jewel mount. A most attractive and desirable musical compact.



77-26

Great delicacy of design and a lovely contrast are achieved by the intricate gilt Florentine design, inlaid in a deep black enamel background. The beautifully shaped and highly polished gilt base harmonises the whole into the most exquisite of musical compacts.



77-605

A musical compact of classical elegance in all gilt jeweller's finish. The fine engine turned design harmonises with the elegant baroque shape of the highly polished base.



This view is showing the "Concerto" compact open. The highly polished gilt engine turned pattern on the inside and the large bevelled mirror complete its luxurious appearance.

Packed in a silk-lined presentation box with a special silk "Dorothy Bag"



All Kigu compacts are made of highly polished gilding metal, protected with an invisible film of enamel which preserves their jewel-like lustre even under extreme climatic conditions. All Kigu compacts are fully guaranteed. Each compact is supplied individually boxed, complete with puff, sifter and pochette, packed six to an outer.

26 SERIES (Compacts)
 96 SERIES (Cigarette Cases)
 98 SERIES (King Size Cig. Cases)

1961
KIGU

Dolphin



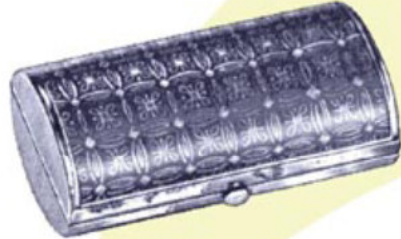
26-25 or 96-25

On a translucent azure blue background, delicate white polka dots are giving a most pleasing effect to this "Dolphin" compact.



26-21MJ or 96-21MJ

Deep jet black enamel provides a most luxurious setting for the glittering jewel mount on this unusual "Dolphin" compact that conveys an atmosphere of gracious living. Supplied with assorted jewel mounts.



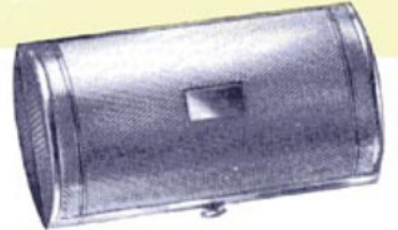
26-31 or 96-31

An elegant style of shining gilt star and chain design on a luscious deep black contrasting background. A compact to delight.



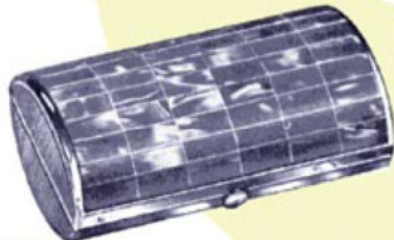
26-49 or 96-49

This "Dolphin" compact is decorated by a pair of graceful white swans captured in their natural setting, surrounded by delicate water lilies on silky satin all gilt background.



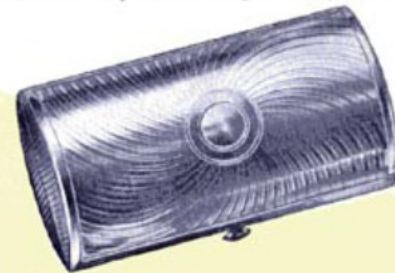
26-03 or 96-03

Advanced styling of this new "Dolphin" compact captures the modern woman's heart. Supremely elegant in its simplicity is the "barley" engine turned design in all gilt jeweller's finish with central initial panel.



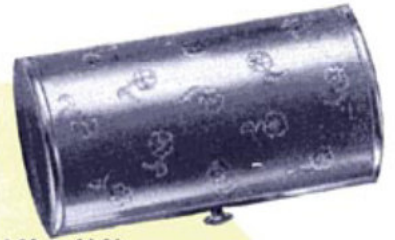
26-85

This compact with its inlaid mother-of-pearl cover captures the rich luminous beauty and natural opalescent quality which has a fascinating appeal to all.



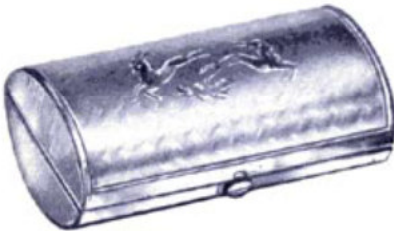
26-815 or 96-815

The highly polished flowing curves dominate the jeweller's all gilt engine turned Catherine-wheel design. This "best seller" illustrates the Kigu flair for originality and distinction.



26-20 or 96-20

This charming compact, in the newest of the new "Dolphin" shapes, portrays the Tudor Rose flower, embossed in jeweller's bright gilt on a fine "silk" engine turned background.



26-717 or 96-717

The graceful leaping deer, in shining jeweller's gilt against the engine turned "shantung" background, is a delight to the eye. A lively and graceful design.



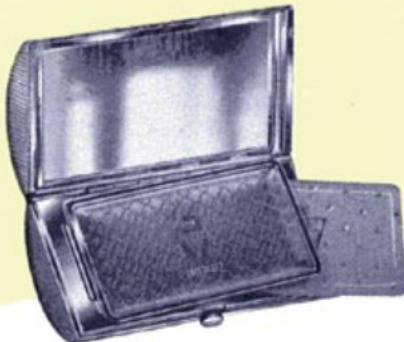
26-847 or 96-847

The ripple of the silvery engine turned background gleams through the opalescent enamel in the delicate shades of blue, pink or white. Decorated with a motif of flowers in their natural colours. A compact of striking originality.

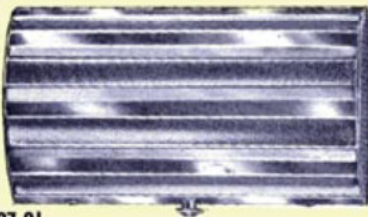


26-540 or 96-540

Against a translucent azure blue enamel background wild ducks in flight are portrayed most artistically in glorious natural colours. As pretty as a picture and beautiful to behold, this compact will never cease to charm.



This photograph shows our 26-series "Dolphin" compact open. Note the large mirror and spacious powder container.



97-01

This fluted "Dolphin" cigarette case holding 12 cigarettes is in alternate engine turned fine "barley" design and highly polished jeweller's gilt panels. An example of Kigu craftsmanship.

27-01

Also available as compact.



All Kigu compacts and cigarette cases are made of highly polished gilding metal, protected with an invisible film of enamel which preserves their jewel-like lustre even under extreme climatic conditions. All Kigu compacts are fully guaranteed. Each compact is supplied individually boxed, complete with puff, sifter and pochette, packed six to an outer.

89 SERIES

KIGU

Rondo



Musical Compact

Our "Rondo" Musical Compact, identical in shape to our King Size "Dolphin" Cigarette Case, is made in a variety of attractive designs and in a wide assortment of classical and popular tunes. Size: 3 1/4" x 1 1/4" (87 mm. x 40 mm.). Weight: 4 1/2 oz. (125 grams). 89-Series. All designs shown on the opposite page in our 26 series are available on this Musical Compact.



TBB/2 with
 26-25—Compact
 98-25—King Size Cigarette Case
 60-25—Comb in Case
 525—"Flippy" lipstick mirror

This delightful presentation set in a most attractive luxon (im.) covered jewel box, lined satin and velvet, contains the newest of the new in compact, king size cigarette case, "Flippy" lipstick mirror and comb. Matching design of white polka dots on azure blue translucent background.

TBB/2 with
 26-815—Compact
 98-815—King Size Cigarette Case
 60-815—Comb in Case
 015—Lipstick Case

This presentation set is in luxon (im.) covered jewel box. It contains a matching set in our lustrous all gilt Catherine-wheel design.



94 SERIES

KIGU

Firenze

A hexagonal Cigarette Case (prefix 94-) holding 10 cigarettes. Modelled on classical Florentine design. Boxed individually, six to an outer. Size: 3" x 1 1/4" (77 mm. x 40 mm.). Weight: 2 oz. (57 grams).



94-25
 The translucent azure blue background sets off to perfection the white polka dots on this delightful cigarette case. A stylish pattern on a classical Florentine shape.



94-01
 The fine engine turned pattern in jeweller's gilt finish with the beautifully engraved side and the bright initial panel complete the classical styling of this cigarette case.



94-21MJ
 The gleaming jet black enamel cigarette case is exquisitely set off by the magnificent jewel mount. The epitome of good taste.

All Kigu compacts and cigarette cases are made of highly polished gilding metal, protected with an invisible film of enamel which preserves their jewel-like lustre even under extreme climatic conditions. All Kigu compacts are fully guaranteed. Each compact is supplied individually boxed, complete with puff, sifter and pochette, packed six to an outer.

78 SERIES

KIGU

Bolero



78-7738MJ

An all silver-plated creation radiating gleaming lights through the delicate shades of translucent pink, blue or white lustrous enamel adorned by a most impressive fashion jewel mount. A compact of striking originality.

A strikingly unusual shape for the sophisticated. Its scalloped oval form nestles snugly in the palm of the hand. Patented slender construction, fitted inner lid with patented sliding catch to protect finger nails.
Size: 3½" × 2½" (90 mm. × 65 mm.). Weight: 4 oz. (113 grams).



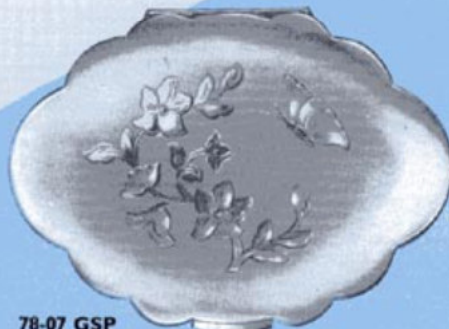
78-23

This original creation of a sea shell design of jet black enamel segments alternating most strikingly with the beautiful engine turned gilt "barley-corn" panels. Elegant artistic pattern styled to appeal to all.



78-21MJ

For the smart occasion. Jet black enamel highlighted by a delicate central jewel mount makes this a compact of classical beauty, and unmistakably Kigu in its individuality. Available with assorted jewel mounts.

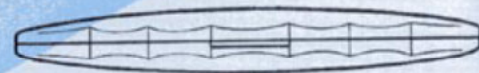


78-07 GSP

Mirror polished lustrous gilt butterfly and floral motif enriches the soft tone of the smooth satin silver background, making this compact a delight to behold.

78-07

As above but in all gilt.



This illustration shows the side view of our "Bolero Series" of compacts. Their slenderness and slightly domed shape are outstanding features (pat.).



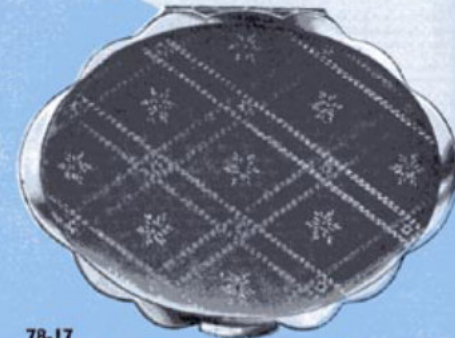
78-02

This strikingly attractive all gilt compact, decorated with a delicate wavy engine turned design has an engraved scalloped edge and is enhanced by a highly polished central initial panel.



78-717

These delightful leaping deer brought to life in lustrous bright gilt, against a delicate shade of fine "shantung" and highly polished surround, present all the exclusive refinements and features of Kigu quality.



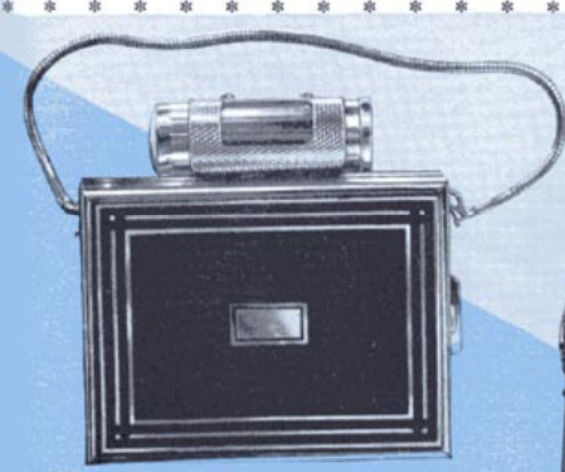
78-17

Fine gilt "shantung" background embellished by dainty engine turned criss-cross lines and star motif gives an effect of subdued elegance.



Photograph shows interior of "Bolero" compact.

All Kigu compacts are made of highly polished gilding metal, protected with an invisible film of enamel which preserves their jewel-like lustre even under extreme climatic conditions. All Kigu compacts are fully guaranteed. Each compact is supplied individually boxed, complete with puff, sifter and pochette, packed six to an outer.

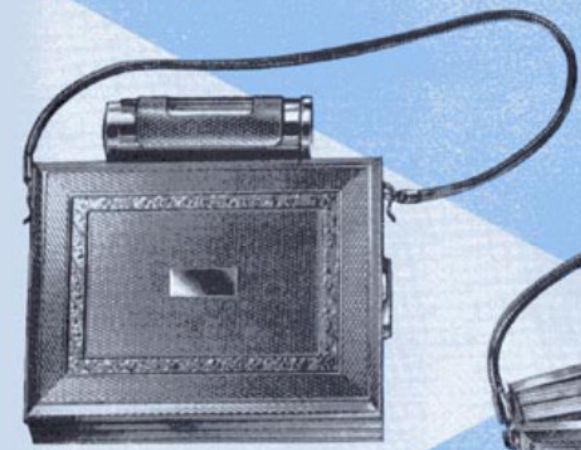


74-28
The complete answer for an evening out. This party case, containing compact, cigarette case and lipstick holder, in the simplicity of the jet black enamel, contrasting against the highly polish gilt lined and central initial panel, is most appealing and refreshingly different.



74-23MJ
This party case of compact, cigarette case and lipstick holder combined, in gleaming jet black enamel with a most impressive jewel mount, is set off to great effect by the bright engine turned jeweller's gilt surround. A delight to hold and use by the discriminating.

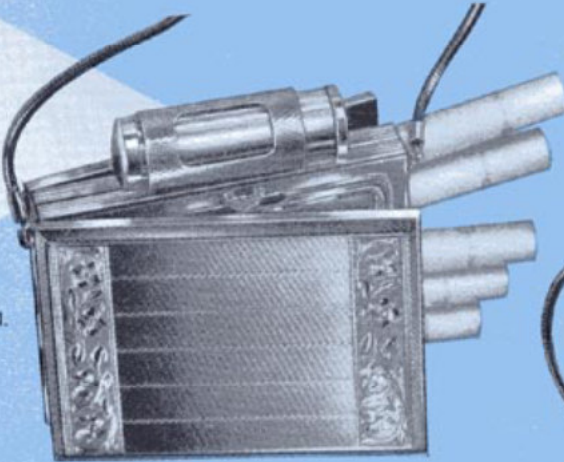
Combination "Party Case" consisting of cigarette case, detachable lipstick holder and powder compact that has spill-proof inner lid and patented sliding catch protecting finger nails. Supplied with puff, sifter and pochette for evening wear. The serviceable snake chain adds a touch of glamour, and enables the party case to be worn on the arm.
Size: 3" x 3" (76 mm. x 76 mm.).
Weight: 6 1/2 oz. (180 grams).



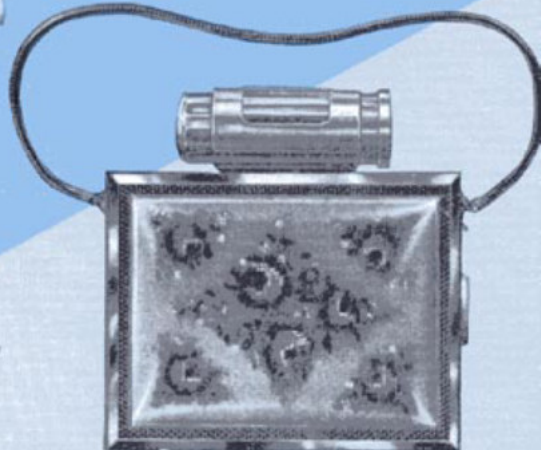
74-07
Party case combination of compact, cigarette case and lipstick holder, in fine engine turned "barley" design with gleaming central initial panel. The delicately engraved frame tones harmoniously to produce a restrained elegant effect.
74-07GSP
As above but in two tone, gilt and silver-plate.



74-83
A most endearing party case in glorious mother-of-pearl in all white with its natural opalescent shine against the engine turned gilt frame. Powder compact, cigarette case and lipstick holder combined. Thrilling to use and expressing new loveliness.



74-11 Open
An open party case showing the compact part in front and the cigarette case at the back. Elegant engine turned design in all gilt jeweller's finish. The richly engraved panels contrast effectively with the very fine design in the centre.



74-30
This is indeed a handsome party case—floral Petit Point embroidered on white or black background, in a delightful engine turned jeweller's gilt frame. The Kigu compact, cigarette case and lipstick holder are combined to give everlasting pleasure to the owner.



74-85
Bewitching beauty of the party case in the unspoiled translucent loveliness of real mother-of-pearl is complemented by the surround of engine turned pattern in jeweller's gilt. Containing powder compact, cigarette case and lipstick holder. This is instinctively chosen by the woman who must have the very best. Luxury indeed!



All Kigu compacts are made of highly polished gilding metal, protected with an invisible film of enamel which preserves their jewel-like lustre even under extreme climatic conditions. All Kigu compacts are fully guaranteed. Each compact is supplied individually boxed, complete with puff, sifter and pochette, packed six to an outer.

67 SERIES

* * * * *

Elegant oblong shape with curved, bright polished sides. A compact of real distinction and superb proportions. Fitted spill-proof inner lid with patented Kigu sliding catch to protect finger nails.

Size: 3 1/4" x 2 1/4" (82 mm. x 62 mm.) Weight: 4 1/2 oz. (127 grams).



67-09

A delicate engine turned spot and line pattern surrounded by rich engraving in beautiful jeweller's gilt finish. This design bears the Kigu hall-mark of craftsmanship of the highest order.

67-09GSP

As above but in two-tone effect. The engine turned spot and line pattern proclaims its unique beauty in gleaming gilt. The surrounding finely chiselled design in lustrous silver-plate.

67-05MJ

The delicacy of this highly polished and dainty engine turned pattern is embraced by two sparkling crescent shaped jewel mounts. Bejewelled simplicity at its best in this Kigu compact.

67-05

As above but without jewel mount.

56 SERIES

* * * * *

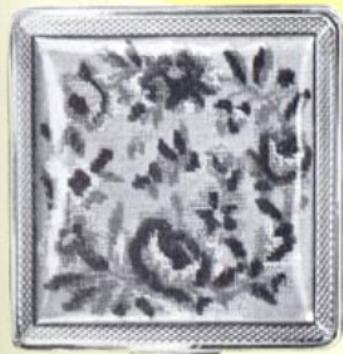
Neatly shaped square compact with rounded corners, well proportioned. Fitted spill-proof inner lid with patented Kigu sliding catch to protect finger nails.

Size: 2 1/4" x 2 1/4" (71 mm. x 71 mm.) Weight: 4 1/2 oz. (127 grams).



56-717

The hazy and delicate shimmer of "silk" in jeweller's gilt finish is highlighted here by a small bright rosette in relief. An air of delicacy surrounds this compact.



56-30

The highly polished gilt frame in engine turned design displays to full advantage the lovely colouring and delicate embroidery of the charming Petit Point motif.

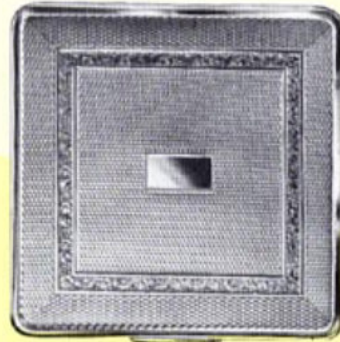
KIGU



67-30 Ever popular Petit Point is featured in an unusually fine example of embroidery. The engine turned gilt frame forms a perfect setting for this elegantly styled compact.



KIGU



56-07

Square compact in flawlessly executed engine turned "barley" pattern, enlivened by a narrow band of engraved floral motifs.



56-08

A richly engraved design in sparkling gilt finish displays, as its central motif, radiating lines reflecting the light, and so achieving a charming effect.

56-85

This attractive square compact is also available with top quality mother-of-pearl decoration.



Contessa

* * * * *



67-87 Thick white mother-of-pearl framed in shining black enamel makes this compact an object of beauty.



67-01 This classical engine turned pattern with its rippling sun ray illusion has a central initial panel in all gilt.

Oxford

* * * * *



56-21MJ

Jet black enamel with delightful, sparkling jewel mount. Also available with attractive dog motifs, not illustrated.

All Kigu compacts are made of highly polished gilding metal, protected with an invisible film of enamel which preserves their jewel-like lustre even under extreme climatic conditions. All Kigu compacts are fully guaranteed. Each compact is supplied individually boxed, complete with puff, sifter and pochette, packed six to an outer.

This elegantly shaped, domed square compact is available with or without built-in lipstick case. The lipstick case will take all makes of cartridge type (swivel) lipsticks. Patented fluted edge and automatically opening inner lid. All patterns illustrated (with the exception of the Petit Point) available in both series. Size: 3 1/2" x 3 1/2" (82 mm. x 82 mm.). Weight: 4 1/2 oz. (134 grams).



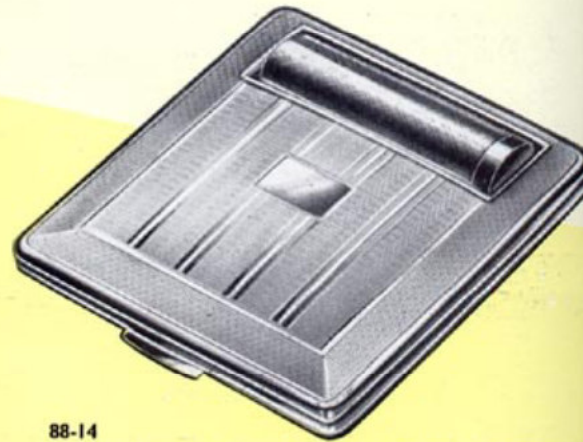
88-919MJ
The character of the Kigu compacts is brilliantly expressed in this engine turned pattern. The glittering jewel mount is gracefully placed on the silky centre panel.

88-919GSP.MJ
Same pattern as above but in two-tone gilt and silver finish. A more luxurious edition of this much favoured compact.



88-919
Modern styling in an all gilt compact. The delicately engraved panels and bright frames contrast vividly with the fine satin background.

88-919GSP
Same pattern as above but in two-tone gilt and silver finish. The silver-plated satin background sets off strikingly the gilt engraved pattern.



88-14
The superior quality of the all gilt stylish design in gleaming bright with fine lines and the highly polished initial panel are distinguishing features of this compact. Built-in lipstick case.



88-914
The modern woven effect of the engine turned pattern in jeweller's gilt finish spells elegance to the fashion conscious.



88-07
The cleverly devised basket weave engine turned design gains in beauty by the brilliance of the jeweller's finish in all gilt. Built-in lipstick case.



88-OPEN
Our "COMET" (88-) Series open compact shows the large bevelled mirror, the built-in lipstick case ready for use and the spill-proof inner lid which covers the large powder container.

57 Series (without lipstick case) available in all the designs shown on this page.



57-21MJ/B
On the lovely domed top of this well proportioned compact gleams jet black enamel, setting off to full advantage a sparkling fashion jewel mount.

57-21MJ/Ass.
Also available with assorted jewel mounts.



57-03
First-class craftsmanship is displayed to full advantage in this beautifully domed all gilt square compact. Engraved floral corners form a framework for the central motif of gently undulating scalloped lines, with central initial panel.



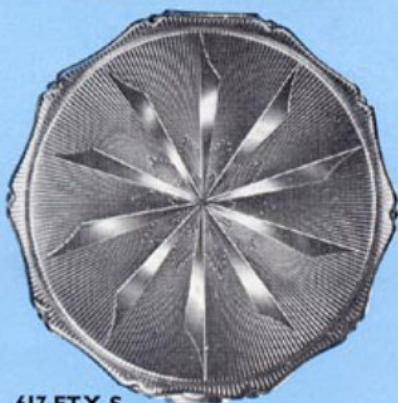
57-30
The dainty stitches and exquisite colouring of the large Petit Point insert are surrounded by a frame of highly polished engine turned design in glittering gilt finish.

KIGU

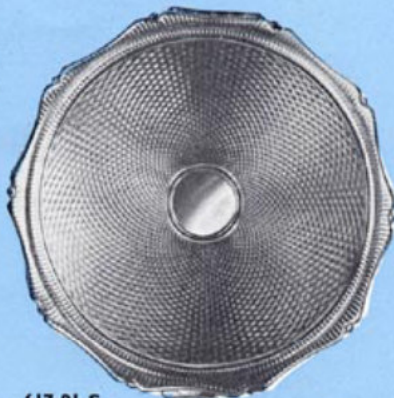
* Solid Sterling HALL



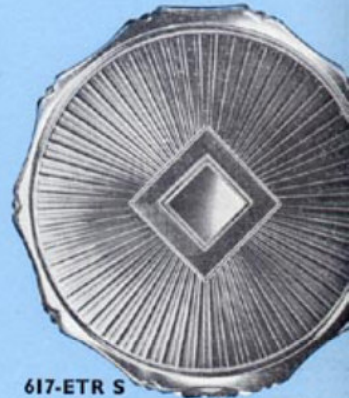
56-717 S
"Oxford" compact in a delicate shimmer of silver "silk" finish is highlighted by a bright rosette in relief. Size: 2 1/4" x 2 1/4" (71 mm. x 71 mm.). Weight: 4 1/2 oz. (125 grams) net.



617-ETX S
"Mayfair" convertible dual-purpose compact has a star design in broad bands of highly polished silver. Size: 3" dia. (73 mm.). Weight: 3 1/2 oz. (110 grams) net.



617-01 S
"Mayfair" classical "barley-corn" engine turned pattern with bright central initial medallion combines simplicity in design and restrained elegance. Size: 3" dia. (73 mm.). Weight: 3 1/2 oz. (110 grams) net.



617-ETR S
"Mayfair" convertible dual-purpose compact. A shining square initial panel for the centre from which radiate bright rays. Size: 3" dia. (73 mm.). Weight: 3 1/2 oz. (110 grams) net.



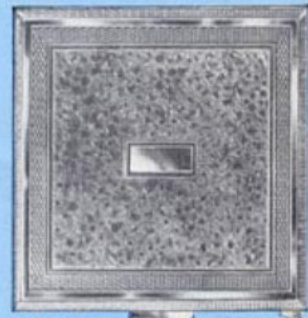
56-07 S
"Oxford" square compact in flawlessly executed engine turned "barley" pattern, enlivened by a narrow band of engraved floral motifs. Size: 2 1/4" x 2 1/4" (71 mm. x 71 mm.). Weight: 4 1/2 oz. (125 grams) net.



69-03 S
"Karette". Elegance and classic simplicity in engine turned design. Side panels in "barley-corn" pattern flank the central design. Modern in appeal in jeweller's silver finish. Size: 2 1/4" x 2 1/4" (62 mm. x 62 mm.). Weight: 4 1/2 oz. (125 grams) net.



69-07 S
"Karette". The delightful simplicity of the central pattern combines happily with the daintily engraved surround.



69-08 S
"Karette". A richly engraved scroll design of high decorative effect. A delightful pattern in highly polished jeweller's silver finish.



51-12 S
"Mini" compact. Impeccable "barley" engine turned pattern that is classical in styling. Size: 2 1/4" dia. (62 mm.). Weight: 2 1/2 oz. (80 grams) net.



78-717 S
"Bolero". The delightful leaping deer are brought to life against a delicate fine "shantung" background. Size: 3 1/4" x 2 1/4" (90 mm. x 62 mm.). Weight: 3 1/2 oz. (100 grams) net.



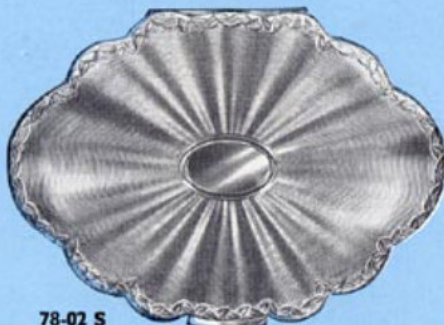
58-717 S
"Cherie". Exquisite heart shaped compact with the delicate shimmer of silky background and the artistically designed motif of birds and leaves. Size: 3" x 3" (73 mm. x 73 mm.). Weight: 3 1/2 oz. (110 grams) net.



58-07 S
"Cherie". Lovely heart shape encompassing the delicate fleur-de-lis in a distinct diamond pattern. Size: 3" x 3" (73 mm. x 73 mm.). Weight: 3 1/2 oz. (110 grams) net.

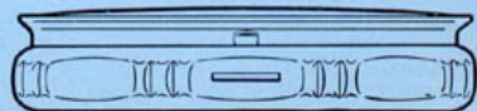


51-709 S
"Mini" compacts of fine engine turned design and elegant engraved border with central initial panel. Size: 2 1/4" dia. (62 mm.). Weight: 2 1/2 oz. (80 grams) net.



78-02 S
"Bolero". Strikingly attractive sterling silver compact with a delicate wavy engine turned design and engraved scalloped edge. Size: 3 1/4" x 2 1/4" (90 mm. x 62 mm.). Weight: 3 1/2 oz. (100 grams) net.

Side elevation of "Concerto" Musical Compact.



All the Kigu Solid Silver Compacts are hall-marked throughout and are protected by an invisible film of enamel to prevent tarnishing. Their lustrous silver sheen will be preserved if the compacts are kept in the pochettes provided. Each compact is supplied with puff, sifter and pochette and is boxed individually. These compacts can be supplied in attractive, satin lined presentation boxes at an additional cost of 2s. 9d. each.

Silver Compacts *

MARKED * * * * *

KIGU

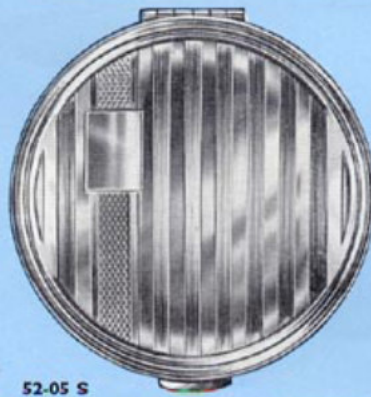
* * * * *



67-09 S
"Contessa" compact. The delicate engine turned spot and line pattern surrounded by rich engraving in beautiful jeweller's silver finish. Size: 3 1/4" x 2 1/4" dia. (82 mm. x 62 mm.). Weight: 4 oz. (125 grams) net.



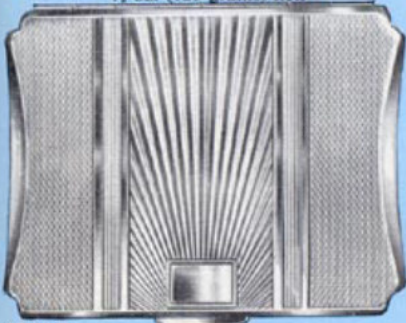
52-919 S
"Gloria". Rings of engine turned "barley" pattern interspersed with smooth satin circles. Truly a beautiful effect. Size: 3" dia. (73 mm.). Weight: 3 1/4 oz. (100 grams) net.



52-05 S
"Gloria". The superior quality of the stylish design of gleaming bright and fine vertical lines, the unusual positioning of the initial panel are distinguishing features in this compact. Size: 3" dia. (73 mm.). Weight: 3 1/4 oz. (100 grams) net.



52-903 S
"Gloria". A stylish engine turned pattern with sun ray lines and floral engraved border. Size: 3" dia. (73 mm.). Weight: 3 1/4 oz. (100 grams) net.



67-01 S
"Contessa" compact with engine turned fine "barley-corn" pattern and a central design of rippling sun rays. Size: 3 1/4" x 2 1/4" dia. (82 mm. x 62 mm.). Weight: 4 1/4 oz. (125 grams) net.



70-20 S
"Venus" slim compact. A delicate patterned Tudor Rose motif on a fine linen background gains in distinction by the jeweller's finish. Size: 3 1/4" dia. (77 mm.). Weight: 4 oz. (115 grams) net.

70-804 S
"Venus" compact of flowing beauty in a sun ray effect engine turned pattern. A compact of slender elegance. Size: 3 1/4" dia. (77 mm.). Weight: 4 oz. (115 grams) net.



70-908 S
"Venus" lavishly engraved. The rich craftsmanship of the chased pattern is encompassed by a border of superfine engine turned design. Size: 3 1/4" dia. (77 mm.). Weight: 4 oz. (115 grams) net.



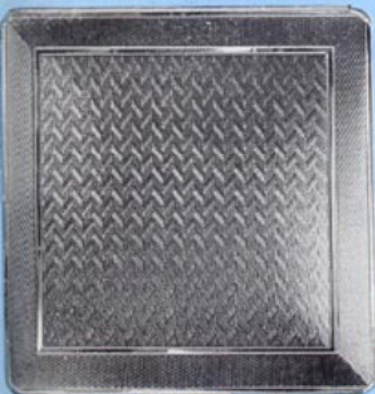
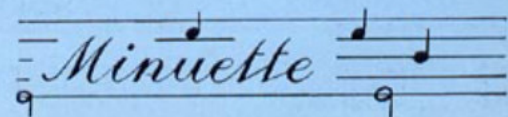
57-03 S
"Regent" compact. The engraved floral corners form a framework for the central motif of delicate engine turned gently undulating scalloped lines. Size: 3 1/4" x 3 1/4" (82 mm. x 82 mm.). Weight: 5 1/4 oz. (155 grams) net.



77-605 S
"Concerto." A musical compact of classical elegance playing a selection of classical and popular tunes. The fine engine turned design harmonises with the elegant baroque shape of the highly polished base. This compact has a deep well for powder and is encased in a satin lined presentation box. Size: 3 1/4" x 2 1/4" (90 mm. x 62 mm.). Weight: 5 1/4 oz. (155 grams) net.



73-20 S
"Minuette". Amongst the glittering floral motifs a gracefully engraved ribbon winds its way on this charming musical compact playing the latest popular tunes. This has a deep well for powder supplied in a silk "Dorothy Bag". Size: 3 1/4" x 2 1/4" (90 mm. x 62 mm.). Weight: 5 1/4 oz. (150 grams) net.



"Regent" compact. The skilful engine turned design gives a delicate woven effect. In bright jeweller's silver finish. Size: 3 1/4" x 3 1/4" (82 mm. x 82 mm.). Weight: 5 1/4 oz. (155 grams) net.

17 SERIES

KIGU

Lido

Convertible "Dual Purpose" Compacts for loose or solid powder. Has every fashion flair feature, its extreme slimmness making it most popular.

Size: 3 1/2" dia. (78 mm. dia.). Weight: 2 1/2 oz. (70 gra



17-30
The delightful Petit Point on this compact achieves completeness from the gilt engine turned design border. A truly feminine creation.

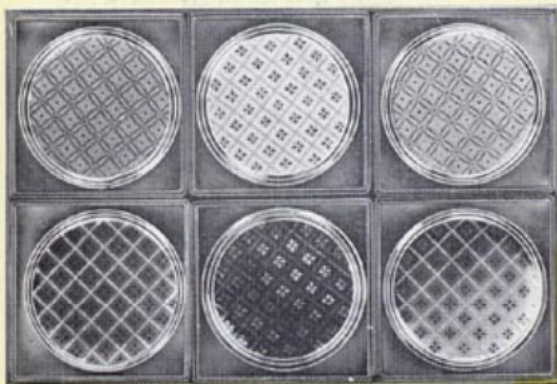


17-549
Gracefully floating swans and cygnets in their natural surroundings depicted on translucent azure blue enamel background.

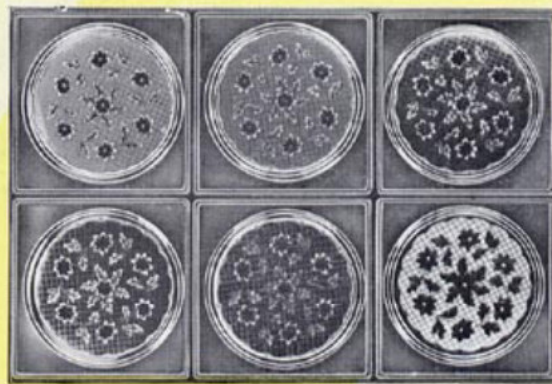


17-21 MJ
This jet black enamel convertible compact with its deep lustre speaks volumes for Kigu quality. The delicate fashion jewel mount contributes brilliantly to this creation's overall allure.

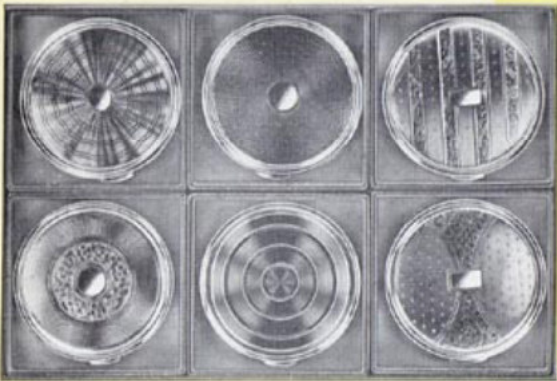
17-802
The engraved and radial lines are an enlivening feature of this impressively new convertible compact. A craftsman-styled engine turned design in finest gilt jeweller's finish.



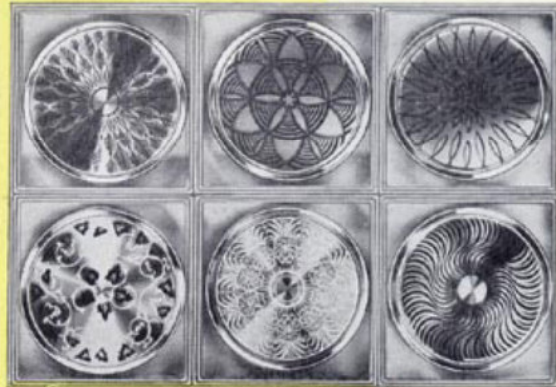
UNIT No. 21. Six best sellers from this season's array of colour-gay compacts. All very practical (convertible, solid or loose powder) as befits the times, and jeweller finished to a degree of excellence rarely reached.



UNIT No. 22. A matching set of six superbly styled convertible compacts. The coloured flowers have a radiant freshness that is most realistic.



UNIT No. 23. In this set of six different popular patterns of engine turned design and gilt jeweller's finish, the much appreciated convertible advantage is an ingenious feature.



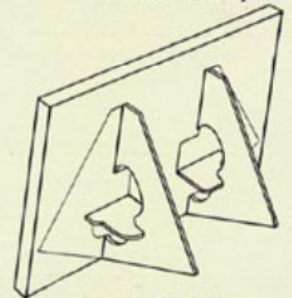
UNIT No. 24. These six designs, all embodying the convertible feature, and with their satin and bright and lace motifs, are flattering-to-use creations.

"UNITS" OF SIX 17 SERIES

(21, 22, 23 and 24)

Each attractive unit comprising six assorted patterns of a type is packed a practical "point of sale" display carton ideal for the counter. Each compact also individually boxed and has pochette sifter and puff.

Size: 10 1/2" x 7 1/2" (265 mm. x 185 mm.)
Weight: 1 lb. 9 oz. (700 grams).
Per Unit of 6 compacts.



All Kigu compacts are made of high polished gilding metal, protected with a invisible film of enamel which preserve their jewel-like lustre even under extreme climatic conditions. All Kigu compacts are fully guaranteed. Each compact supplied individually boxed, complete with puff, sifter and pochette, packed six to an outer.



17-20
The delicately patterned Tudor Rose motif on a fine linen background gains in distinction by the excellence of the jeweller's gilt finish.

17-20GSP
As above but in two tone, gilt and silver-plate.



17-83
Iridescent charm in a harmonious blending of a dazling white inlaid mother-of-pearl pattern that weaves a spell of heart capturing beauty.



17-834
An individually created gilt convertible compact with satin background on which a bright bough wreath unites in beauty with dots of red.



17-845
A superb rendering of the satin and bright motif with a novel design. The golden glow bespeaks a quality of jeweller's gilt finish.



17-828B
The engraved gilt scroll design stands out in striking relief against the rich lustre of a black enamel background.

17-828 W
As above but gilt scroll on white background.



17-915
The quality of the fine dazling engine turned pattern, in an all gilt jeweller's finish of quite exceptional merit, makes this convertible compact an outstanding success.



17-945
Delicate yellow and pink roses artistically arranged on an azure blue background give this compact an unusual warm intrinsic charm.

17-946
As above but on jet black background.

Convertible "Dual Purpose" Compacts for loose or solid powder. Has every fashion flair feature, its extreme slimmness making it most popular.

Size: 3 1/2" dia. (78 mm. dia.). Weight: 2 1/2 oz. (70 grams).

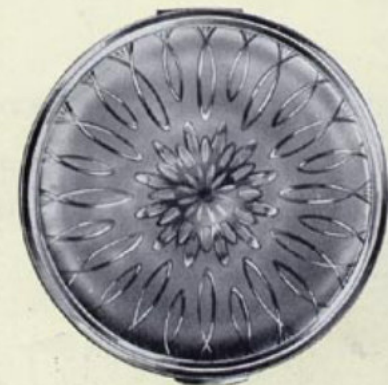


17-12MJ
A "barley" gilt engine turned design of unblemished beauty, elegantly adorned by a dazzling fashion jewel mounts.

17-12
As above but without jewel mount.



17-18
The concentric bright circles of this inspired convertible compact convey the illusion of rhythmic movement and the fine lines and brilliant gilt patterning indicate rare and delicate skill.

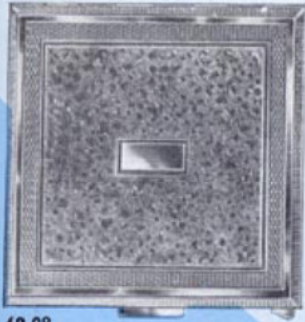


17-842
The satin and bright all gilt convertible compact has style and feminine appeal. Here, the demure daisy motif is outstanding in its charm and beauty.

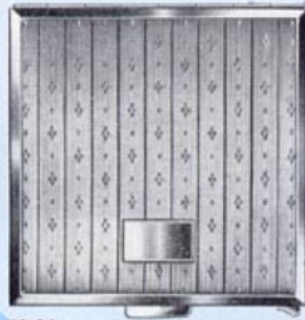
69 SERIES

KIGU

Karette



69-08
This compact has a richly chased scroll design of high decorative effect. A delightful pattern, finished in highly polished gilt and designed to please the most discriminating taste.



69-14
This wafer thin square compact reveals in every detail the sensitive touch of the true craftsman. The jeweller's engine turned pattern is seen to best advantage in the brilliantly polished all gilt finish.



69-21MJ
Slender beauty in a compact of deep jet black enamel provides an impressive setting for the gleaming jewel ornament. Most certainly the choice of refined tastes.



69-07
The delightful simplicity of the engine turned pattern combines happily with the daintily engraved design surrounding it. An exquisite compact of great delicacy in all gilt.

69-07GSP
As above but in two-tone effect of gleaming gilt and shimmering silver plate. A supremely elegant compact for day or evening.



69-85
The fascinating beauty of mother-of-pearl makes this Kigu compact an object of delicacy and charm.

69-83
Same compact as above with thinner layer of mother-of-pearl gives luxury at lower price.



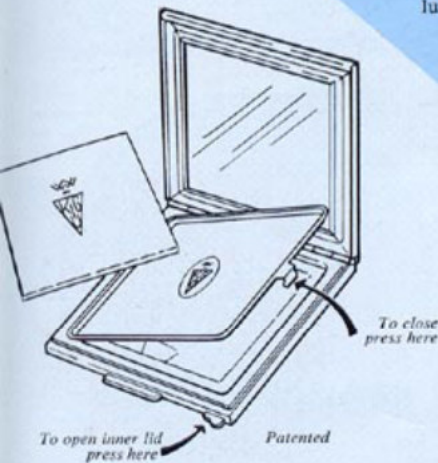
69-10
A stylish engine turned pattern forms a perfect background for delicately engraved flying bird design in glittering gilt. A handsome compact in highly polished jeweller's finish.



69-30
The tasteful embroidery of the charming Petit Point motif is beautifully displayed in the elegant gilt highly polished engine turned frame.



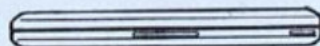
69-716
This design shows contemporary craftsmanship at its best—a simple "bark" pattern, beautifully executed in glittering jeweller's finish, reflecting the light in rippling playfulness.



Another exclusive Kigu feature, the "remote control" opening of the inner lid.



All Kigu compacts are made of highly polished gilding metal, protected with an invisible film of enamel which preserves their jewel-like lustre even under extreme climatic conditions. All Kigu compacts are fully guaranteed. Each compact is supplied individually boxed, complete with puff, sifter and pochette, packed six to an outer.



Side elevation shows the unique slenderness of the "Karette" compact.

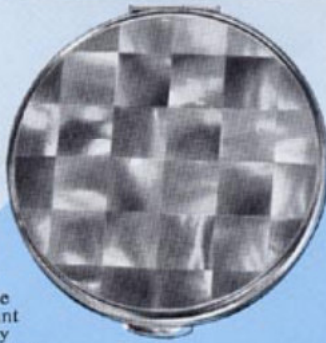
51 SERIES

KIGU

Mini

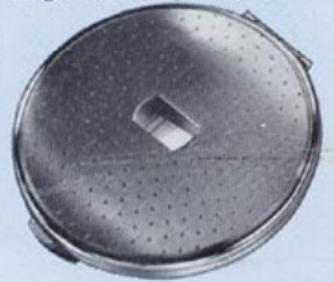


51-707MJ
Delicate "shantung" effect in this all gilt engine turned design. A dominant note is struck by the lovely jewel mount of two hearts entwined, appealing to all ages.



51-85
This compact is instantly recognisable by the connoisseur. Real mother-of-pearl capturing ethereal beauty which is luxury indeed.

The smallest round Kigu compact ideally suited for the teenager. It has the patented fluted Kigu construction which makes it an outstanding spill-proof compact; fitted inner lid with patented sliding catch to protect finger nails.
Size: 2 1/4" dia. (62 mm. dia.). Weight: 2 1/2 oz. (75 grams).



51-605
The fine lines and spot engine turned pattern, so sensitively inscribed, is alive with the glow of the high-grade quality in jeweller's all gilt finish.



51-51B
The delicate all over design of coloured flowers on the black dotted background tunes harmoniously with fashion styles of this day.

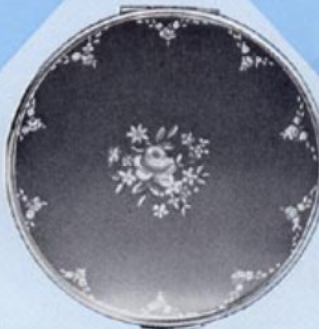
51-51W
As above but on white background.



51-12
This all gilt compact, with its impeccable "barley" engine turned pattern, is a decided preference wherever classical styling and assured quality are foremost considerations.



51-08
The refined character of the engraved leaf and scroll pattern and central initial panel of this compact is distinctly individual. The rich quality of the gilt lustrous jeweller's finish lifts a traditional design above the commonplace.



51-924B
A smart design of glossy gleaming jet black enamel with a bright relief of a gay floral motif in the centre and around the edge giving it a distinctive decor.

51-30
The quality of the exquisite Petit Point insert is picked up delightfully by the shimmering gilt frame, making an attractive feminine finish.



51-21MJ
This black enamel compact has a depth of lustre and smoothness that the fashion jewel mount, which can be obtained in various designs, sets off to perfection.



51-709
The smooth flowing simplicity of the fine engine turned design, and the elegant fashioning of the engraved border are complemented by the central initial panel, in all gilt jeweller's finish.

51-924W
As above but on white background.



51-762
The coloured floral perspex insert and the gilt frame of engine turned design makes this a decidedly original compact in 3-D effect.



51-04
Typical of Kigu creations is this all gilt compact with its superior engine turned sun ray pattern, initial panel and lustrous jeweller's finish.



51-83
The translucent beauty of this mother-of-pearl compact has a definite fascination designed to go straight to the heart of a discerning woman.



All Kigu compacts are made of highly polished gilding metal, protected with an invisible film of enamel which preserves their jewel-like lustre even under extreme climatic conditions. All Kigu compacts are fully guaranteed. Each compact is supplied individually boxed, complete with puff, sifter and pochette, packed six to an outer.

71 SERIES

KIGU

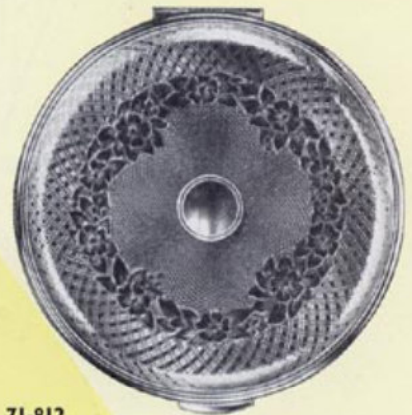
Windsor



71-20
The magnificently embossed scattered flower pattern attains stately splendour as portrayed against the silk-fine engine turned background of this all gilt compact.



71-83
The all white mother-of-pearl set in an engine turned lustrous gilt frame makes this an original and thrillingly distinctive compact.



71-812
A graceful floral engraved pattern in all gilt has a harmonising basket weave border. A captivating style that carries the Kigu imprint of progressive leadership in design.



71-932
The fine decorative work in gilt glows with a golden radiance against the fluid depths of the azure blue background.



71-946
A colourful jewel design with a satin background is arranged in a black scalloped frame. The engine turned bevelled border has a highly polished finish.



71-737MJ
Subdued beams of radiance shine through the translucent colour of the pink, blue or white enamelled silver top. The engine turned pattern background has a crisply classical quality and the jewel mount is a charming ornament.

72 SERIES —

Ascot

These compacts are as our 71-series but with the additional feature of having fitted inner lid.



71-949
A delicately coloured swan design against a gilt satin background. An interesting effect is achieved by the striking contour of the black scalloped border and the highly polished engine turned gilt frame.



71-924
Luxury tempered with restrained dignity—a serenely lovely design. The perfectly styled satin and black rings vie in beauty with a lively border of gilt flowers on a black background.

All Kigu compacts are made of highly polished gilding metal, protected with an invisible film of enamel which preserves their jewel-like lustre even under extreme climatic conditions. All Kigu compacts are fully guaranteed. Each compact is supplied individually boxed, complete with puff, sifter and pochette, packed six to an outer.

71 SERIES

KIGU

Windsor

Convertible Kigu compact for loose and solid (Creme) powder fitted with patented special retaining ring which makes it suitable for all makes of solid powder refills.

Size: 3 1/4" dia. (82 mm. dia.). Weight: 4 oz. (113 grams).



71-25
The polka dot motif on an azure blue background provides cool translucent depth.

71-25MJ
As above but with assorted fashion jewel mounts.



71-22B or W
This sophisticated Kigu creation with its honeycomb patterning of gilt and black or gilt and white enamel is finished to a sunshine radiance. A personal touch is added by its central initial panel.



71-21MJ
The aristocratic appeal of jet black enamel encircled in a gilt engine turned pattern border is further enriched by a jewel mount of unusual beauty.



71-30
A colour lovely Petit Point embroidery made irresistible in its appeal by the added attraction of a gilt engine turned pattern border.



71-01
An all gilt compact of simple yet striking design. The masterly craftsmanship of the "foxhead" engine turned design is intensified by the very special finish and the bright initial panel.



71-04
Typical of Kigu creations is this all gilt compact with its superior engine turned sun ray pattern, initial panel and lustrous jeweller's finish.



71-914
A beautifully simple design. The delicate, woven engine turned pattern has a deeply satisfying quality and the jeweller's finish ensures lasting loveliness.

71-914MJ
As above but with assorted fashion jewel mounts.



71-909GSP
Two-tone colour décor in a silver-plated satin compact of striking individual beauty. The chased border of engine turned pattern and the oscillating wavy design, both in gilt, express the modern trend in compacts.

71 SERIES Windsor

Illustration showing fitted Retaining Ring (pat.).



Side elevation shows the graceful lines of the gentle doming and the patented fluted edge.

All Kigu compacts are made of highly polished gilding metal, protected with an invisible film of enamel which preserves their jewel-like lustre even under extreme climatic conditions. All Kigu compacts are fully guaranteed. Each compact is supplied individually boxed, complete with puff, sifter and pochette, packed six to an outer.

06 SERIES

KIGU

Dahlia



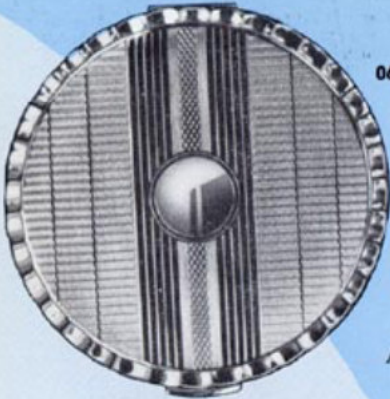
06-104

Three different designs in bright gilt and satin effect are included in this series. Delicate floral motifs as well as lace patterns are displayed to advantage on satin smooth background.



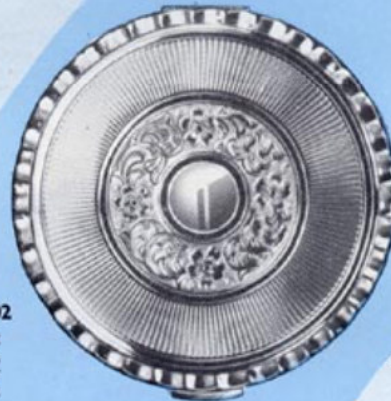
06-104B

Black designs on satin gilt background adorn this series. Floral and dainty lace patterns show up to advantage on this attractive assortment of three different compacts.



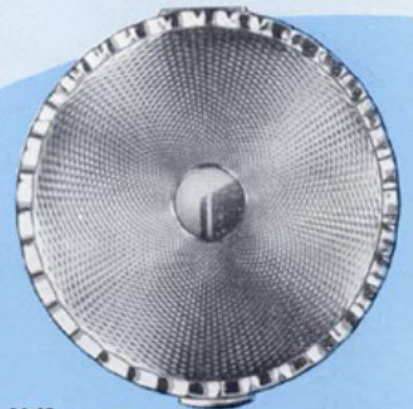
06-09

A happy contrast is achieved by the undulating gilt border and the simple bands of engine turned pattern. A bright gilt initial panel enlivens the centre of this compact.



06-802

A richly engraved pattern and a ring of bright gilt radiating lines, surrounded by a scalloped border combine in this lovely Kigu compact in glittering jeweller's finish.



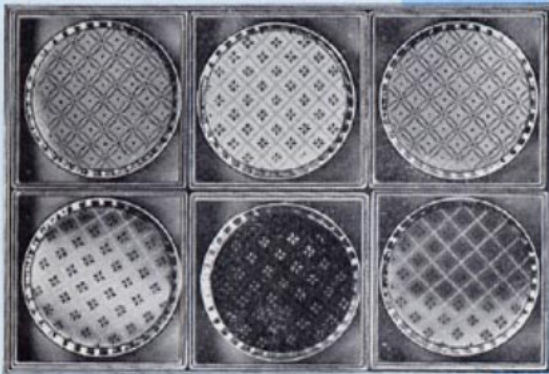
06-12

The classical engine-turned "barley" pattern is shown up to advantage by the bright gilt border. A glittering central initial panel completes the charming appearance of this compact.

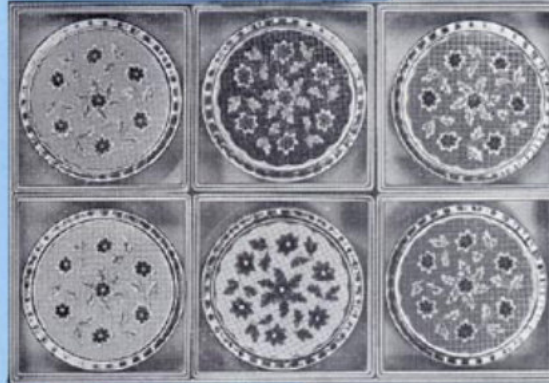
"UNITS" OF SIX-06-SERIES

(11, 12, 13 and 14)

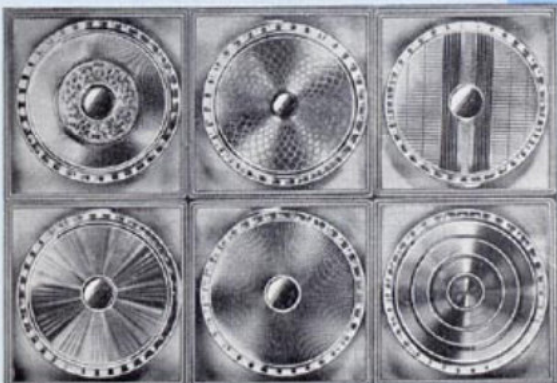
Each attractive unit comprising six assorted patterns of a type is packed in a practical "point of sale" display carton, ideal for the counter. Each compact is also individually boxed and has pochette, sifter and puff. Size: 10 1/2" x 7 1/2" (265 mm. x 185 mm.). Weight: 1 lb. 9 oz. (700 grams). Per Unit of 6 compacts.



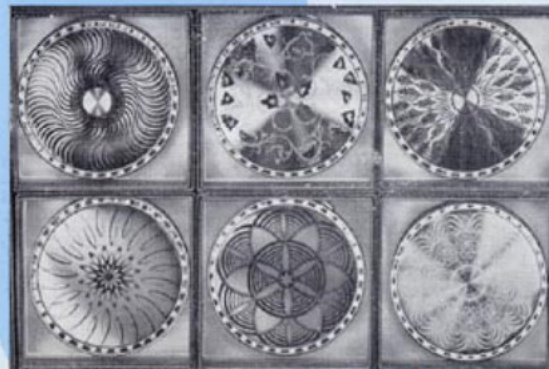
UNIT No. 11. This set of six assorted designs shows a dainty and refreshingly colourful variety. A definite best seller.



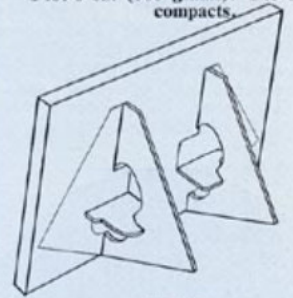
UNIT No. 12. Six enchanting creations of colour-gay floral motifs in red, pink, blue, green, white and black for the young at heart.



UNIT No. 13. Six charming examples of Kigu best selling gilt engine turned designs. The well defined detail of the patterning is high-lighted by the radiance of the jeweller's finish.



UNIT No. 14. Here, in pleasing variety, are six of the latest satin and bright and black lace designs of captivating chic and exclusive character.



All Kigu compacts are made of highly polished gilding metal, protected with an invisible film of enamel which preserves their jewel-like lustre even under extreme climatic conditions. All Kigu compacts are fully guaranteed. Each compact is supplied individually boxed, complete with puff, sifter and pochette, packed six to an outer.

KIGU

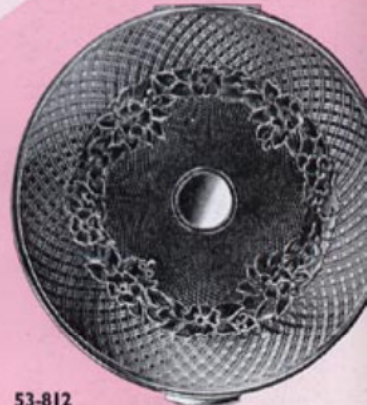


53-924
There's a "good as gold" look about this gilt satin and black enamel compact that makes it eminently satisfying in quality. The scalloped border is superbly patterned with gilt flowers against a black background.

53-914
Kigu exclusiveness in a design beloved by the fashion wise. The quiet dignity of the woven all gilt engine turned pattern is highlighted by the attractive "barley-corn" border.

53-914MJ

As above but with attractive fashion jewel mount.



53-812
Outstanding feature of this all gilt compact is the expertly engraved flower pattern and the broad "basket weave" engine turned design that borders it. A shining example in all gilt of the Kigu flair for style right creations.



53-909GSP

Compact of unsurpassed elegance. This two-tone compact in smooth satin silver-plate and gilt is tastefully enhanced by its chased and engine turned gilt border design and further embellished by the oscillating gilt wavy lines.



53-825B

The gleaming sweep of the Catherine-wheel design in gilt engine turned pattern is highlighted against the black enamel background of this stylish compact.

53-825W

As above but with white background.



53-08GSP

Two tone engine turned pattern compact in gilt and silver-plate. The highly polished gilt chased floral design is successfully contrasted by the fine engine turned pattern in silver-plate.

53-08

Also available in all gilt.

Locket

53-73

A lively imaginative design, incorporating locket holder for two photographs. Engraved scroll design in jeweller's all gilt finish surrounds the nicely decorated photoholder.



53-673

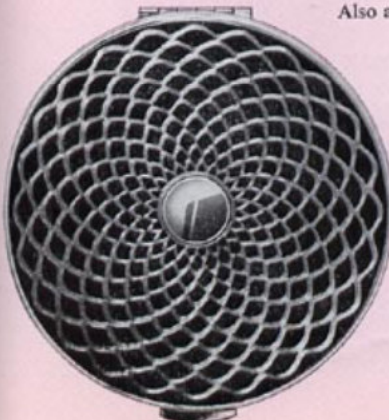
Also available with heart shaped locket which has a secret opening. (pat. pen.)

Locket Compacts



53-23

Gaiety and glamour in an excitingly different creation. The ingeniously devised tracery of a large diamond jewel mount is displayed in its full glory against the black background. The central panel and border in highly polished gilt are most becoming.



53-22B

This compact of gilt "honeycomb" engine turned design gains in beauty from the black background.

53-22W

As above but in gilt on white background.



53-30

Delicately fashioned colourful Petit Point insert with a slim gilt engine turned border completes this fascinating compact.



53-25MJ

An attractive compact with white polka dots on translucent azure blue background. The shimmering light of radiating beams are adding to the fascinating effect. A jewelled ornament imparts dazzling beauty.

53-25 As above but without jewel mount.

82 SERIES

KIGU

Cambridge



82-07

An elegant oblong compact in jeweller's gilt finish. The engine turned diamond shaped segments form a delicate background to the raised fleur-de-lis motifs.

Oblong compact of elegant proportions with rounded corners and bevelled sloping sides. The built-in lipstick case rises ready for use together with the automatically opening spill-proof inner lid, when compact is opened.

Size: 3 1/4" x 2 1/4" (83 mm. x 65 mm.). Weight: 4 1/2 oz. (120 grams).



82-Open

Open compact shows the built-in raised lipstick case ready to use. By opening the top further, the inner lid opens automatically.



82-05

The delicate all gilt engine turned pattern of fine lines and spots is interrupted to reveal the highly polished built-in lipstick case of elegant proportions. Distinction emphasised.

82-05MJ

The same compact also available with fashion jewel mount.



82-02MJ

The glimmering gilt sheen of the elegant, restrained engine turned pattern is highlighted in the corner by an impressive jewel mount. The highly polished fluted built-in lipstick case enhances the appearance of this compact.

82-02

Above compact without jewel mount in its restrained elegance.

Bridesmaids'

KIGU

Compacts



58-747MJX

Any selected initial and sparkling jewel mounts of allegorical wedding bells on translucent pink or white enamel decorate this exquisite compact.



17-921MJ

A convertible compact for loose or solid Creme powder. Central jewel ornament of wedding bells on gleaming jet black enamel.



58-815MJX

Beautiful jewel ornament of wedding bells on lustrous engine turned background and any selected initial in a jewelled frame.



All Kigu compacts are made of highly polished gilding metal, protected with an invisible film of enamel which preserves their jewel-like lustre even under extreme climatic conditions. All Kigu compacts are fully guaranteed. Each compact is supplied individually boxed, complete with puff, sifter and pochette, packed six to an outer.



58-08
A gleaming all gilt heart shaped compact where highlights play on the chased scroll design. An attractively shaped initial panel completes the handsome appearance of this Kigu compact.



58-30
Delicacy is the key word here. An engine turned gilt surround frames the dainty Petit Point embroidery of this heart shaped compact. A truly feminine creation to win the ladies' hearts.



58-716
A highly polished gilt compact with a superbly elegant pattern. Jeweller's chiselled gilt burk design, beautiful in its simplicity. Ideally suitable for the discerning.



58-04
The delicate engine turned design of the fine lines and spot pattern contrasts happily with the engraved border which emphasises the attractive outline of this beautiful, all gilt, heart shaped compact.



58-815
A superb effect is achieved in this heart shaped compact by the highly polished skilful engine turned design. The pattern in jeweller's gilt finish evokes the beauty of a dazzling Catherine-wheel.



58-717
The background of this compact brings to mind the delicate shimmer of silk. An artistic design of birds and leaves is exquisitely engraved in gleaming gilt finish.



58-07
A handsome heart shaped compact in gleaming jeweller's gilt finish. In the diamond shaped segments of its engine turned pattern are delicate fleur-de-lis motifs, lending this compact character and charm.



58-21MJ
Lustrous black enamel with assorted glittering jewel mounts—a compact of superb elegance and charm.

All Kigu compacts are made of highly polished gilding metal, protected with an invisible film of enamel which preserves their jewel-like lustre even under extreme climatic conditions. All Kigu compacts are fully guaranteed. Each compact is supplied individually boxed, complete with puff, sifter and pochette, packed six to an outer.

This beautifully designed heart shaped compact is one of the most popular Kigu lines. Its unusual shape delights the heart of young and old.

Size: 3" x 3" (76 mm. x 76 mm.) Weight: 3 oz. (85 grams).

The novel "Bridesmaid" Compact as featured on Television and in the National Press is from this Series.

A personal and individual gift loved by women

INITIALS. All these compacts have interchangeable initials. They are changed simply by pressing with thumb and slightly turning (pat.). A voucher which is supplied with each compact enables you to obtain free of charge an additional initial (or sign of the Zodiac) for the Kigu Interchangeable Initial Compacts. This will help you to accumulate a supply of spare letters which can be kept conveniently in a display holder (supplied free at your request) and so ensure instant service. A complete set of 26 initials is obtainable in a handy transparent display holder.

SIGNS OF THE ZODIAC. These signs of the Zodiac are interchangeable with our initials and can be fitted into all our Initial Compacts. Any one of them is supplied free of charge in exchange for a voucher. Full set of 12 can also be obtained.



AQUARIUS
Jan. 20-Feb. 18



70-605X

"Venus". The combination of two engine turned designs, fine spots evenly dispersed and the elegant "barley" border are most appropriate. This is complemented by personal jewelled initial.



PISCES
Feb. 19-Mar. 20



600-23X

"Regency". This extremely slim Kigu fancy round compact in highly polished black enamel with engine turned gilt border shows to effect the jewelled initial mount.



70-21X

"Venus" extremely slim compact. The jewelled initial, offset against the depths of the highly polished jet black enamel background, produces a most beguiling effect.



ARIES
Mar. 21-Apr. 19



TAURUS
Apr. 20-May 20



GEMINI
May 21-June 20



CANCER
June 21-July 22



58-21X

"Cherie". Heart shaped compact in lustrous black enamel, embellished with a personal initial set in its jewelled frame.



LEO
July 23-Aug. 22



VIRGO
Aug. 23-Sept. 22



67-19X

This "Contessa" compact in smooth satin gilt jeweller's finish, complemented with a centrally placed jewelled initial, is a delight to behold.



58-717X

The background of this "Cherie" heart shape compact brings to mind the delicate shimmer of "silk". The exquisite, artistically engraved design of birds and leaves in gleaming gilt is finished with a jewelled initial.



LIBRA
Sept. 23-Oct. 22



SCORPIO
Oct. 23-Nov. 21



SAGITTARIUS
Nov. 22-Dec. 21



CAPRICORN
Dec. 22-Jan. 19

ALL INITIALS CAN BE CHANGED INSTANTLY



617-ETRX

"Mayfair" convertible dual-purpose all gilt engine turned patterned compact. An unusual square medallion with jewelled personal initial is offset by the highly polished engine turned rays. Supplied with removable retaining ring (pat.) to hold any size solid (Creme) powder firmly.



78-02X

"Bolero". Strikingly attractive all gilt compact decorated with a delicate wavy engine turned design, engraved scalloped edge and enhanced by the jewelled initial mount.



71-21X

"Windsor" dual purpose convertible compact in gleaming jet black enamel an highly polished engine turned "barley corn" surround. The initialised jewel mount is most effective.



Trinket boxes combining presentation case and jewel case covered in simulated Luxon, Brocade, etc. Lined in satin and velvet.



TBB/67-01
Attractive satin and velvet lined trinket box containing one of our "Contessa" compacts and matching lipstick case and comb. If the tray is removed, it becomes a most useful jewel case, with special fitting to hold rings.



TBS/70-815
Presentation case, satin and velvet lined, containing beautifully slim "Venus" compact, Flippy and comb, in the outstanding Catherine-wheel engine turned design in bright jeweller's gilt finish.



TBS/26-717
"Dolphin" compact, cigarette case and Flipette in matching design. All gilt delicate design of leaping deer on silky "shantung" background in glittering jeweller's finish.



TBS/17-945
Matching set of dual-purpose "Lido" compact, Flippy and comb, in the wonderful colourings of roses on blue background presented in a most useful trinket box, satin and velvet lined.

TBS/17-946
Set as above but roses on jet black background.



TBS/71-605
Satin and velvet lined trinket box containing matching set of dual-purpose "Windsor" compact, Flippy and comb. All in highly polished jeweller's gilt, engine turned spot design, with "barley" surround.



DB101/617-ETO
"Mayfair" convertible compact with matching lipstick case in silk lined presentation box. The all gilt engine turned design is in highly polished jeweller's finish.

All these trinket boxes can be supplied with most of our compacts. Trinket boxes are supplied in simulated Luxon covering. Please state if brocade covering is required. All lipstick cases are made to take the automatic swivel lipstick refills.

50 SERIES



Pill Boxes

Pill boxes by Kigu designed for personal use to carry on every occasion. All have white enamelled interior and spring catch and are protected with an invisible film of enamel which preserves the jewel-like lustre even under extreme climatic conditions, packed six to an outer. Size: 1½" dia. (40 mm. dia.), Weight: ½ oz. (14 grams).



50-21MJ
Jet black shining enamel with delightful jewel mount.



50-828B or W
A chased bright gilt scroll pattern on black or white enamel background.



50-846B or W
Delightful floral motif on a black or white enamel background.



50-835SP
Coloured leaves are displayed to effect on a silver-plated background.



50-540
Flying ducks portrayed in translucent blue enamel on a silver-plated background.



50-832SP
A delightful flower arrangement on a silver-plated background.



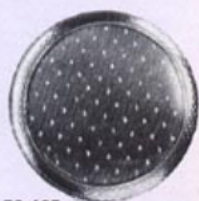
50-716
"Bark" highly polished all gilt engine turned design.



50-08
All gilt chased scroll design with shining initial panel.



50-17
"Shantung" gilt engine turned pattern with small stars.



50-605
Engine turned spot design with "barley" surround all gilt.



50-717
"Shantung" engine turned background with centre flower motif, all gilt.



50-01
Engine turned "barley" pattern with bright initial medallion all gilt.



50-85
Iridescent real mother-of-pearl, extremely lovely.



50-20
Embossed Tudor Rose flower on gilt "silk" background.



50-815
Catherine-wheel design in bright gilt jeweller's finish.



50-812
An expertly produced all gilt engine turned pattern.

48 SERIES



Square Pill Boxes



48-21MJ
Exquisite jet black enamel adorned with jewel mount.

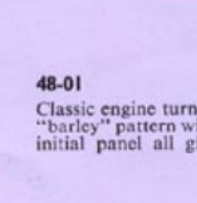


48-10MJ
Immaculate satin gilt with dainty jewel mount.

Size:
1½" sq. (30 mm. sq.)
Weight:
½ oz. (14 grams)



48-20
Embossed Tudor Rose flower in all gilt on "silk" background.



48-01
Classic engine turned "barley" pattern with initial panel all gilt.



48-85
Real mother-of-pearl, gleaming translucently in all its glory.



48-717
All gilt "shantung" background with a graceful leaping deer motif.



520-550 SERIES

KIGU

Flippy

"Flippy" combined all gilt lipstick case and mirror in assorted designs. Slight pressure releases sprung mirror. Holds any swivel lipstick. Most designs to match compacts, combs and pill boxes. Boxed individually and packed six to an outer.



522
All gilt jeweller's finish. Engraved flower design with "basket weave" border. Showing "Flippy" when closed.



534
Highly polished engine turned spot design with "barley" surround.



525
Blue enamel background with white polka dots and gilt lipstick case.



520
Embossed Tudor Rose flower on "silk" gilt background.



532
All gilt embossed flower pattern with bright initial panel.



533
Delightful flower pattern in relief on satin background.



41 SERIES *Aromette* by KIGU

These exquisite perfume bottles for the handbag or dressing table are made by Kigu specially for the discriminating. They are, when closed, hermetically sealed and open to reveal a useful dispenser. Manufactured in all gilt, jet black enamel, and beautifully coloured enamel to match compacts, lipstick cases, combs, pill boxes.



41-4520 41-6287 41-5081 41-5082 41-6200W 41-4122



41-21 41-01 41-02 41-13 41-12 41-605

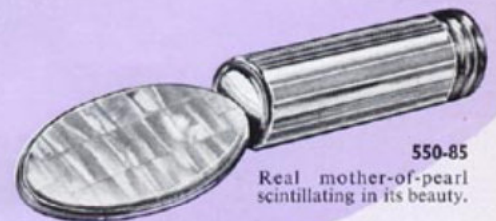
Flipette AS "FLIPPY" BUT SLIMMER MIRROR



550-01
"Barley" engine turned design with highly polished initial panel.



550-605
"Spot" engine turned design in all gilt jeweller's finish.



550-85
Real mother-of-pearl scintillating in its beauty.



550-717
Leaping deer on "shantung". Engine turned gilt jeweller's finish.

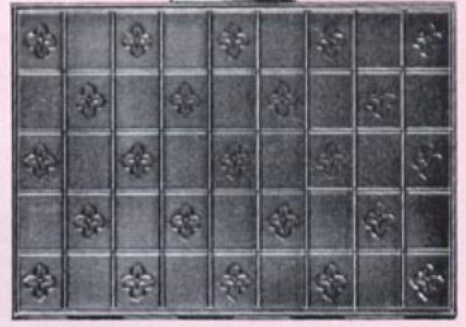
Gentlemen's
CIGARETTE CASES



Ladies'
SLENDER CIGARETTE CASES
for King Size or Normal Size Cigarettes

Size: 5¼" × 3" (135 mm. × 76 mm.).
Weight: 4½ oz. (117 grams).

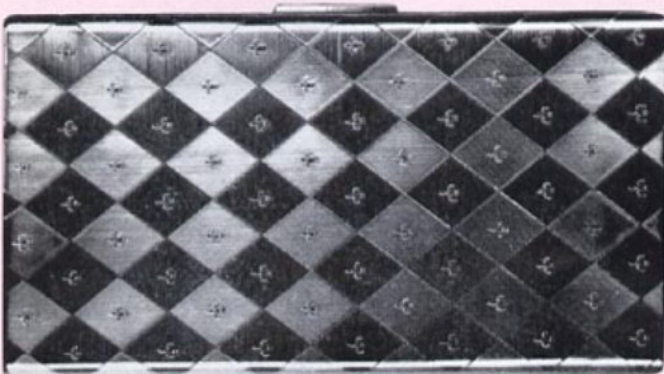
Size: 3¼" × 2¼" (99 mm. × 70 mm.).
Weight: 4½ oz. (117 grams).



90-01 A popular size cigarette case in a classical all gilt engine turned "barley" pattern. Highly polished lines near edge and initial panel combine simplicity with elegance.

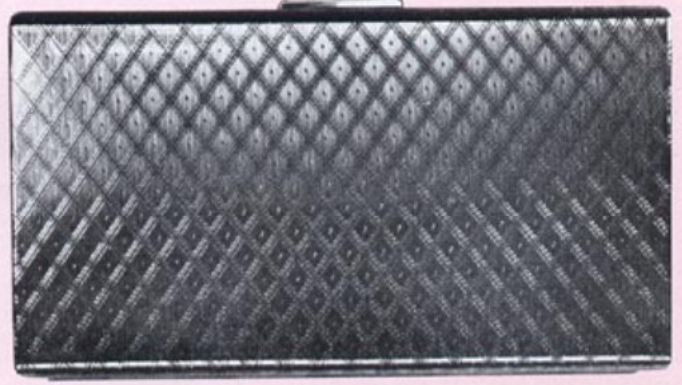
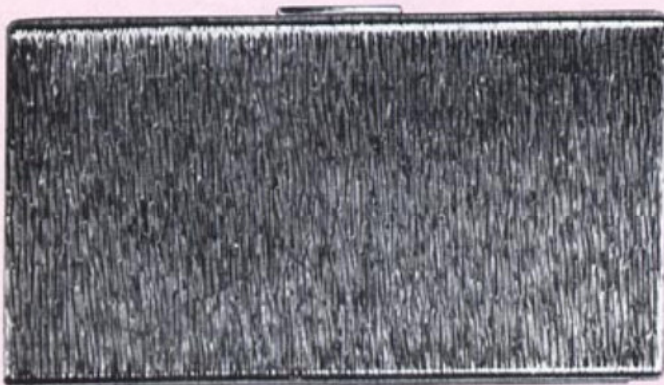
90-02 The exclusive all gilt "silk" moire pattern with engine turned "barley" surround and initial panel is decidedly feminine.

90-03 The engraved flowers, tastefully depicted in small squares on this engine turned case, are distinctively individual.



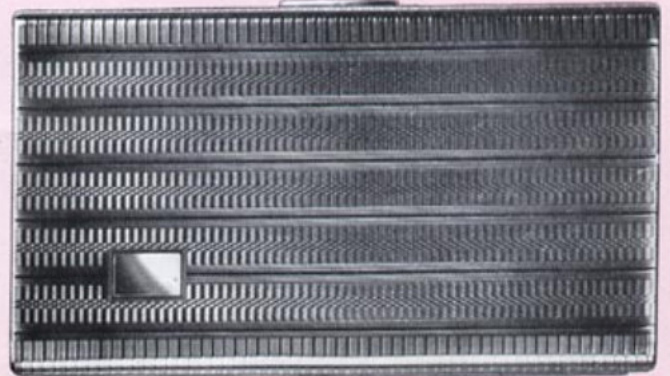
95-07 A superb all gilt engine turned diamond shaped pattern, enhanced with delicately detailed fleur-de-lis, in highly polished jeweller's finish.

95-17 Distinctive fan shaped engine turned design in all gilt. The brightly polished radial wavy lines reflect the gleaming light.



95-716 Advanced styling in all gilt "bark" design of unsurpassed quality and workmanship.

95-12 A stylish engine turned diamond pattern beautifully executed in all gilt.



95-13 Gentleman's cigarette case slim and elegant in jeweller's gilt engine turned finish. "Barley" sides with highly polished lines and initial medallion. Beautifully made and a pleasure to handle.

95-14 This handsome gentleman's cigarette case of extremely bright lines and ribbed engine turned design is an example of excellent craftsmanship.